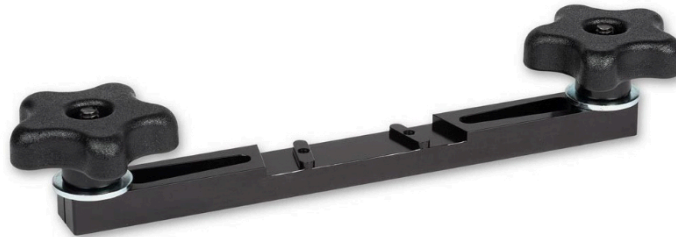


BOW ANCHOR BAR FOR GUIDEPRO



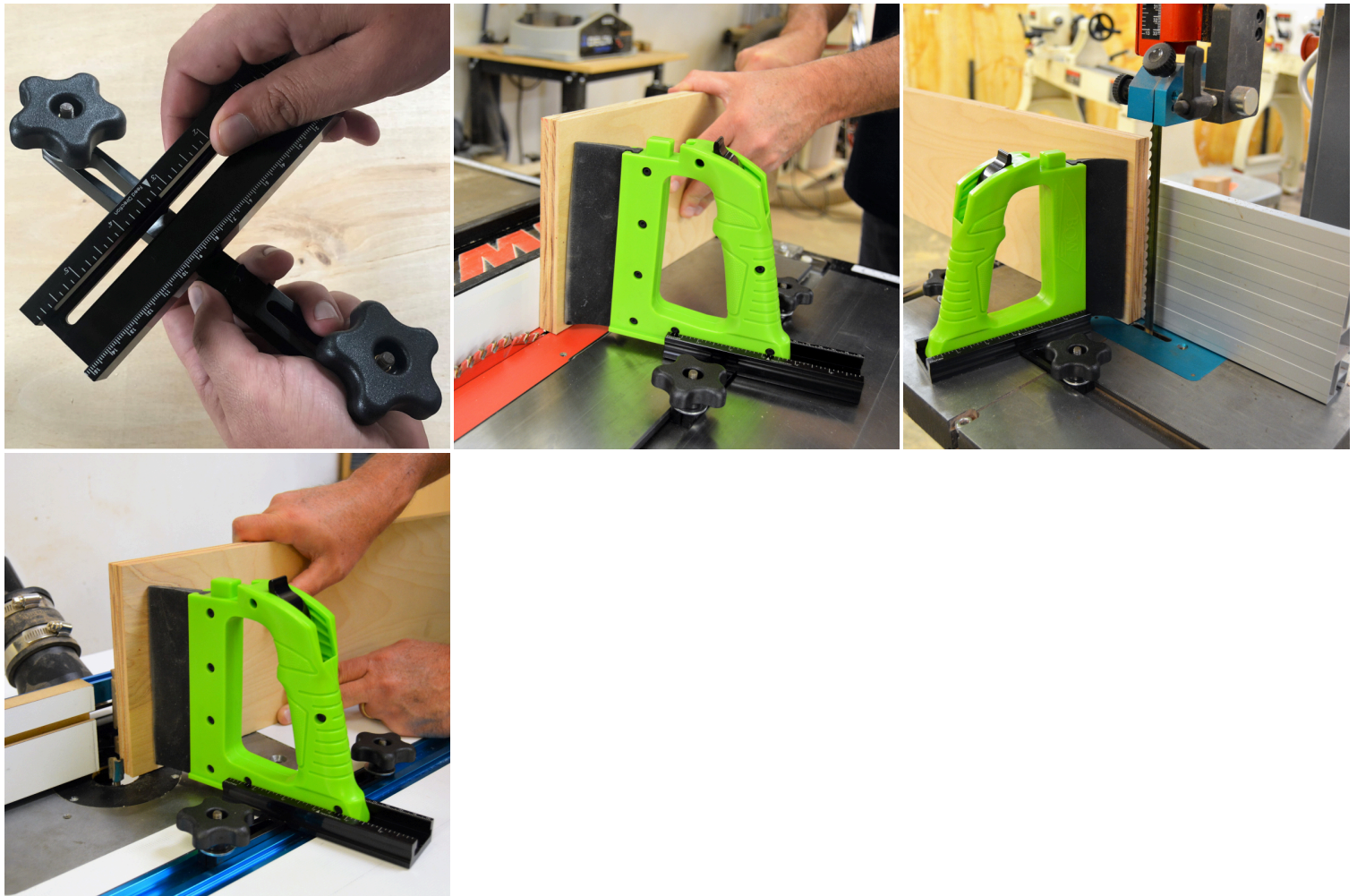
€26,31 (excl. VAT)

You can attach this accessory to the GuidePRO so that you can secure the GuidePRO in your miter slot. Ideal for repetitive and consistent cuts. The GuidePRO comes with a miter cam connector and is designed for quick set-ups and offers excellent feeding benefits for band saw cuts. Some GuidePRO users want the benefits of the GuidePRO, but as a fixed-position tool. The GuidePRO anchor bar locks the GuidePRO securely in place, so you don't have to move the tool with every cut.

GuidePRO Anchor Bar extends the use of the GuidePRO to the router table and table saw.

SKU: PIH-63106

GALERIJAFBEELDINGEN



You can attach this accessory to the GuidePRO so that you can secure the GuidePRO in your miter slot. Ideal for repetitive and consistent cuts. The GuidePRO comes with a miter cam connector and is designed for quick set-ups and offers excellent feeding benefits for band saw cuts. Some GuidePRO users want the benefits of the GuidePRO, but as a fixed-position tool. The GuidePRO anchor bar locks the GuidePRO securely in place, so you don't have to move the tool with every cut.

GuidePRO Anchor Bar extends the use of the GuidePRO to the router table and table saw. The milling or sawing operation is different on a router or table saw than on the band saw where the blade moves down into the

table. Bow Products requires the Miter Anchor to be used with the GuidePRO when used on the router or table saw to lock the tool in place for your safety and the safety of your tools. The GuidePRO Anchor Bar has two options for a left or right feed on these machines.

GuidePRO Anchor bar features and installation:

The GuidePRO anchor has an extendable 19 mm or $\frac{3}{4}$ inch miter bar with locking knobs. The anchor rod has slots for mounting on the GuidePRO base. Just use the included Allen key and unscrew the miter cam. Use the same screw to attach the anchor rod.

Note that the anchor rod has two mounting options for a left or right feed. Fit the selected Boss angle into the slot at the bottom of the GuidePRO base. Screw in place. The slot in the GuidePRO base allows the same positioning range for the GuidePRO to the fence.

PRODUCT INFORMATION

- To give the GuidePRO a fixed position
- Necessary to use the GuidePRO on a saw table or router table

DESCRIPTION

You can attach this accessory to the GuidePRO so that you can secure the GuidePRO in your miter slot. Ideal for repetitive and consistent cuts. The GuidePRO comes with a miter cam connector and is designed for quick set-ups and offers excellent feeding benefits for band saw cuts. Some GuidePRO users want the benefits of the GuidePRO, but as a fixed-position tool. The GuidePRO anchor bar locks the GuidePRO securely in place, so you don't have to move the tool with every cut. GuidePRO Anchor Bar extends the use of the GuidePRO to the router table and table saw. The milling or sawing operation is different on a router or table saw than on the band saw where the blade moves down into the table. Bow Products requires the Miter Anchor to be used with the GuidePRO when used on the router or table saw to lock the tool in place for your safety and the safety of your tools. The GuidePRO Anchor Bar has two options for a left or right feed on these machines. **GuidePRO Anchor bar features and installation:** The GuidePRO anchor has an extendable 19 mm or $\frac{3}{4}$ inch miter bar with locking knobs. The anchor rod has slots for mounting on the GuidePRO base. Just use the included Allen key and unscrew the miter cam. Use the same screw to attach the anchor rod. Note that the anchor rod has two mounting options for a left or right feed. Fit the selected Boss angle into the slot at the bottom of the GuidePRO base. Screw in place. The slot in the GuidePRO base allows the same positioning range for the GuidePRO to the fence.

DOWNLOADS

No download available.

ADDITIONAL INFORMATION

Weight

0,6 kg