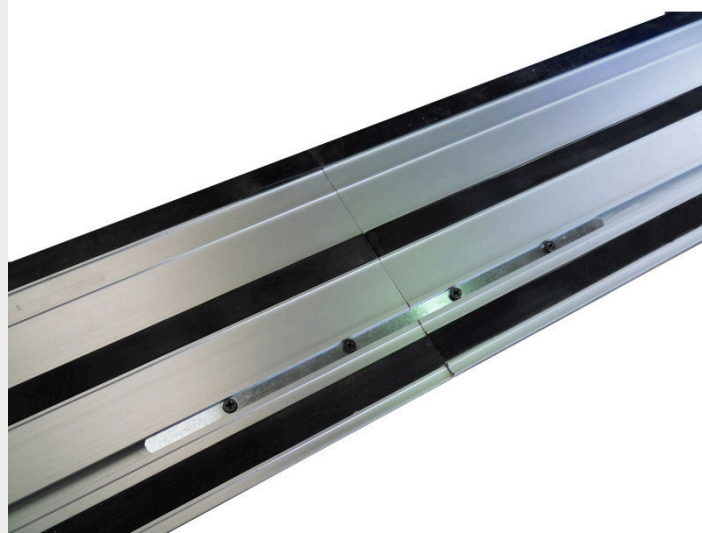


CONNECTION KIT FOR GUIDE RAILS



€12,39 (excl. VAT)

With this connection kit you can easily connect different guide rails of the plunge-cut saws TT55 and TT85.

SKU: 1PSVS1400

With this connection kit you can easily connect different guide rails of the plunge-cut saws TT55 and TT85.

Fits both in the 800 mm and in the 1400 mm guide rail.

PRODUCT INFORMATION

- Easy assembly of guide rails (800 and 1400 mm) for the TT55 and TT85

DESCRIPTION

With this connection kit you can easily connect different guide rails of the plunge-cut saws TT55 and TT85. Fits both in the 800 mm and in the 1400 mm guide rail.

No video available for this product!

DOWNLOADS

No download available.

ADDITIONAL INFORMATION

Weight

0,5 kg