

## ELECTRIC ABRASIVE PLANER CE23N



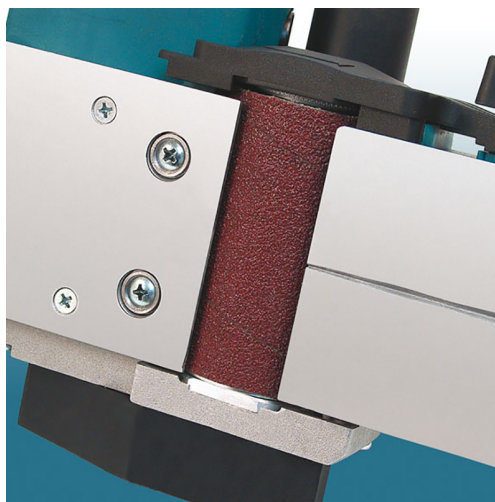
**€463,85 (excl. VAT)**

This abrasive planer from Virutex is easy to use and delivers fast & efficient results on large surfaces. The machine has excellent results on any surface coated with paint, resin, varnish or laminated panels. Easy to use on different surfaces such as wood (also against the grain) or sandwich panels. A sanding sleeve with sanding roller grain 50 is fitted as standard. Sanding rolls with other grit sizes are available on request. No additional tools are required to replace the sanding rollers.

Supplied as standard in a handy PVC case.

**SKU:** VIR-CE23N

## GALERIJAFBEELDINGEN



This abrasive planer from Virutex is easy to use and delivers fast & efficient results on large surfaces. The machine has excellent results on any surface coated with paint, resin, varnish or laminated panels. Easy to use on different surfaces such as wood (also against the grain) or sandwich panels. A sanding sleeve with sanding roller grain 50 is fitted as standard. Sanding rolls with other grit sizes are available on request. No additional tools are required to replace the sanding rollers.

Supplied as standard in a handy PVC case.

## PRODUCT INFORMATION

- Abrasive planer
- Quick change of sanding sleeve
  - For delicate substrates
- Stripping of paint, resin, lacquer,...

## DESCRIPTION

This abrasive planer from Virutex is easy to use and delivers fast & efficient results on large surfaces. The machine has excellent results on any surface coated with paint, resin, varnish or laminated panels. Easy to use on different surfaces such as wood (also against the grain) or sandwich panels. A sanding sleeve with sanding roller grain 50 is fitted as standard. Sanding rolls with other grit sizes are available on request. No additional tools are required to replace the sanding rollers.

Supplied as standard in a handy PVC case.

## DOWNLOADS

No download available.

## ADDITIONAL INFORMATION

<b>Weight</b>	3,2 kg
<b>Input Power</b>	700W
<b>Sanding depth</b>	0-1mm
<b>Sanding roller width</b>	81mm
<b>No-load speed</b>	16500rpm