

GRÖBE 520/7T 230V - SPLITTER 7 TON



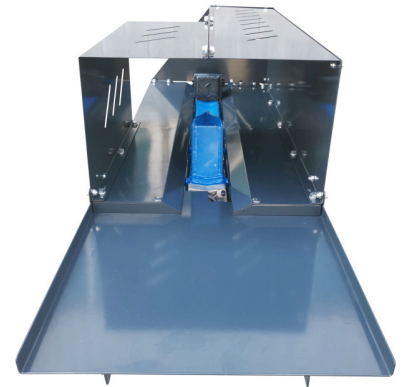
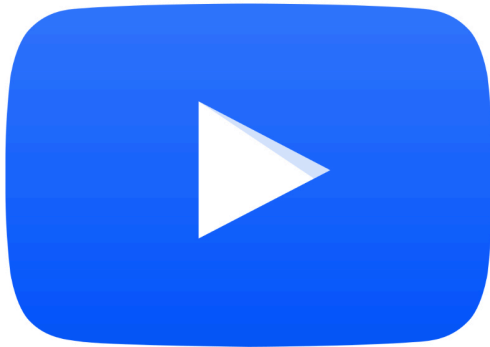
€433,88 (excl. VAT)

This horizontal, compact wood splitter is perfect for home use and splitting firewood. Using this machine, you effortlessly split wood pieces up to 520mm in length and 300mm in diameter. The induction motor on 230V delivers an output of 3.5HP. Use at least power cable with thickness 2.5m² to avoid damaging the motor. Thanks to its powerful motor, this compact splitter has a power of up to 7 tons! The perfect machine for making firewood comfortably and quickly. The Gröbe 520/7T splitter is fully compliant with CEN safety standards for this type of machine. Both the splitter and the control handle are fully protected by a sturdy steel framework. On top of that, the splitting machine is equipped with a collection tray to collect the cleaved pieces of wood. Includes zero voltage protection on the switch for improved safety in the event of voltage loss.

Equipped with sturdy wheels with steel rims. In combination with the impact-resistant rubber tyres, this splitting machine distinguishes itself from the competition. Easy to move on different surfaces. Experience the necessary comfort when moving the machine outside in the garden or on difficult surfaces.

SKU: GRO-12010

GALERIJAFBEELDINGEN



This horizontal, compact wood splitter is perfect for home use and splitting firewood. Using this machine, you effortlessly split wood pieces up to 520mm in length and 300mm in diameter. The induction motor on 230V delivers an output of 3.5HP. Use at least power cable with thickness 2.5m² to avoid damaging the motor. Thanks to its powerful motor, this compact splitter has a power of up to 7 tons! The perfect machine for making

firewood comfortably and quickly. The Gröbe 520/7T splitter is fully compliant with CEN safety standards for this type of machine. Both the splitter and the control handle are fully protected by a sturdy steel framework. On top of that, the splitting machine is equipped with a collection tray to collect the cleaved pieces of wood.

Includes zero voltage protection on the switch for improved safety in the event of voltage loss.

Equipped with sturdy wheels with steel rims. In combination with the impact-resistant rubber tyres, this splitting machine distinguishes itself from the competition. Easy to move on different surfaces. Experience the necessary comfort when moving the machine outside in the garden or on difficult surfaces.

PRODUCT INFORMATION

- Splitter
- X2 impact-resistant rubber wheels
 - 8 tons
 - Mobile
- Up to 520mm length
 - For firewood
- Zero voltage protection
- Induction motor (3.5 HP)
 - 230V
- Tip: use at least 2.5m² cable

DESCRIPTION

This horizontal, compact wood splitter is perfect for home use and splitting firewood. Using this machine, you effortlessly split wood pieces up to 520mm in length and 300mm in diameter. The induction motor on 230V delivers an output of 3.5HP. Use at least power cable with thickness 2.5m² to avoid damaging the motor. Thanks to its powerful motor, this compact splitter has a power of up to 7 tons! The perfect machine for making firewood comfortably and quickly. The Gröbe 520/7T splitter is fully compliant with CEN safety standards for this type of machine. Both the splitter and the control handle are fully protected by a sturdy steel framework. On top of that, the splitting machine is equipped with a collection tray to collect the cleaved pieces of wood. Includes zero voltage protection on the switch for improved safety in the event of voltage loss. Equipped with sturdy wheels with steel rims. In combination with the impact-resistant rubber tyres, this splitting machine distinguishes itself from the competition. Easy to move on different surfaces. Experience the necessary comfort when moving the machine outside in the garden or on difficult surfaces.

DOWNLOADS

No download available.

ADDITIONAL INFORMATION

Weight	50 kg
Voltage	230 V
Motor	3.5 HP
Max. length wood	520mm
Max. Ø wood	300mm