

KREG AUTOMAXX BENCH CLAMP 76 MM WITH BENCH CLAMP BASE



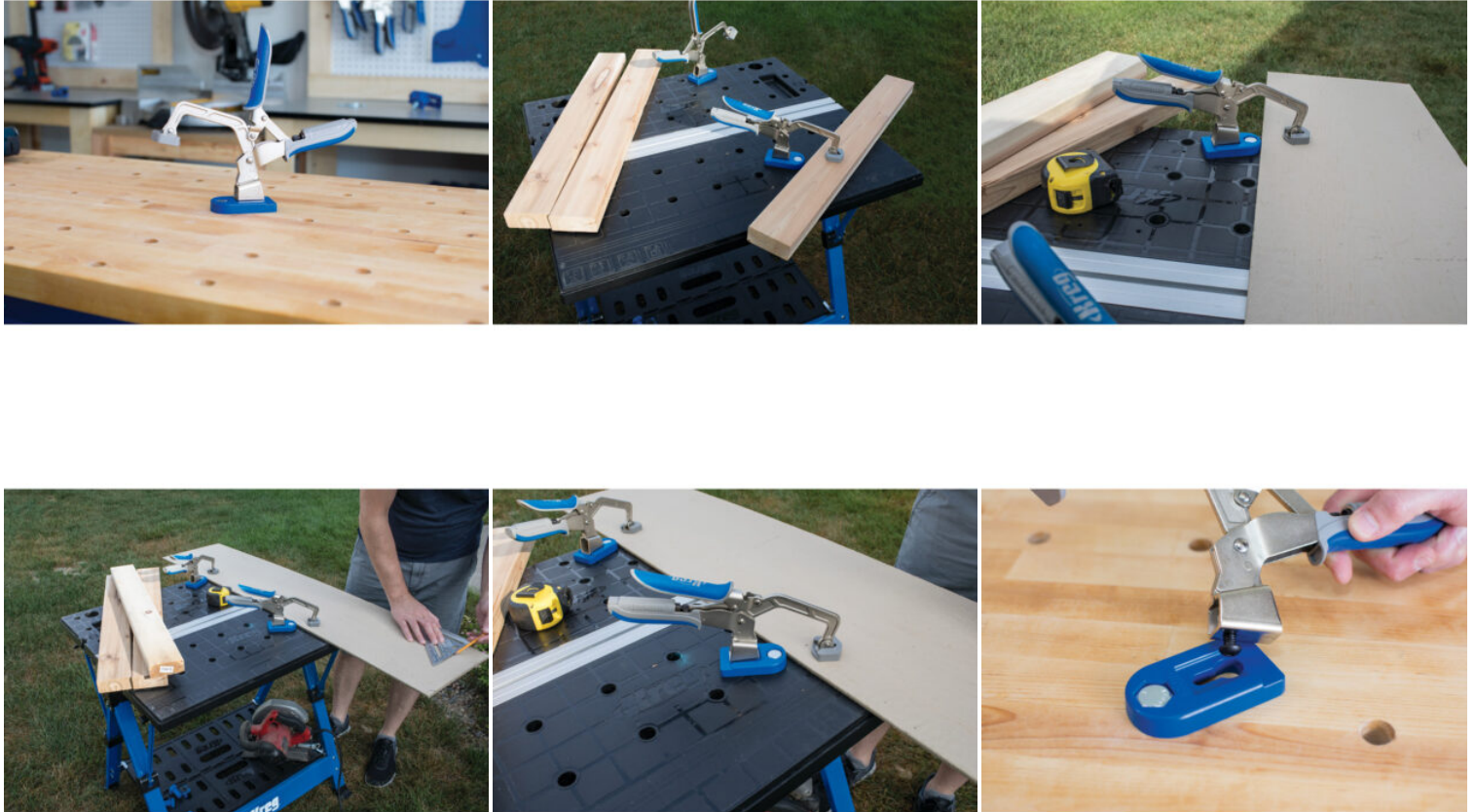
€76,99 (excl. VAT)

Kreg Automaxx quick release clamp for clamping a workpiece with a maximum reach of 88 mm (3 1/2"). You place the clamp in the adapter so that you can clamp it down on the workbench like a hold-down. The adapter has a connection that is suitable for 19 mm (3/4") and 20 mm (3/8") holes.

The workpiece clamp perfectly clamps any material thickness between 0 and 88 mm. Due to the Automaxx transmission in the handle, the clamping force is always optimal and the workpiece is securely clamped. There is a wheel in the handle to adjust the power transmission; heavier or lighter.

SKU: KRE-KBC3-BAS

GALERIJAFBEELDINGEN



Kreg Automaxx quick release clamp for clamping a workpiece with a maximum reach of 88 mm (3 1/2"). You place the clamp in the adapter so that you can clamp it down on the workbench like a hold-down. The adapter has a connection that is suitable for 19 mm (3/4") and 20 mm (3/8") holes.

The workpiece clamp perfectly clamps any material thickness between 0 and 88 mm. Due to the Automaxx transmission in the handle, the clamping force is always optimal and the workpiece is securely clamped. There is a wheel in the handle to adjust the power transmission; heavier or lighter.

PRODUCT INFORMATION

- Clamping depth of 76 mm
- Clamps materials up to 88 mm thick
- Adjusts automatically to the material thickness
- Easy to regulate force by adjusting screw
- Large clamping surfaces prevent damage to your workpiece
- Including bench clamp base

DESCRIPTION

Kreg Automaxx quick release clamp for clamping a workpiece with a maximum reach of 88 mm (3 1/2"). You place the clamp in the adapter so that you can clamp it down on the workbench like a hold-down. The adapter has a connection that is suitable for 19 mm (3/4") and 20 mm (3/8") holes. The workpiece clamp perfectly clamps any material thickness between 0 and 88 mm. Due to the Automaxx transmission in the handle, the clamping force is always optimal and the workpiece is securely clamped. There is a wheel in the handle to adjust the power transmission; heavier or lighter.

No video available for this product!

DOWNLOADS

No download available.