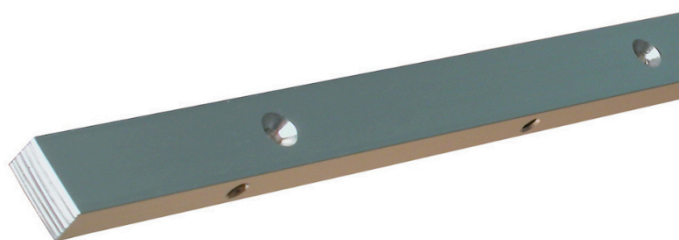


KREG BAR FOR MITER-GAUGE

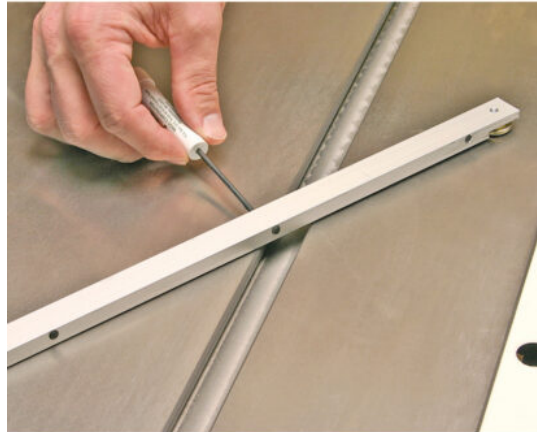


€42,55 (excl. VAT)

This durable rod fits standard mitre grooves of 19 x 9 mm. With eight nylon screws along the entire length of the rod to avoid any play in the groove. Mounting holes are provided every 127 mm. Ideal for fixing moulds and clamps.

SKU: KRE-KMS7303

GALERIJAFBEELDINGEN



This durable rod fits standard mitre grooves of 19 x 9 mm. With eight nylon screws along the entire length of the rod to avoid any play in the groove. Mounting holes are provided every 127 mm. Ideal for fixing moulds and clamps.

Mitre gauge with a precise fit.

If you are making jigs and fixtures for your table saw, router table, band saw or other tool with a mitre slot, you need a rod that fits precisely (in a standard 9 mm x 19 mm mitre slot) and glides smoothly. This one does both

Proven performance

This is the same adjustable bar that comes standard on our precision miter guide, giving you the same proven accuracy on any jigs you make.

Built-in adjustability

Six nylon screws along the entire length of the rod can be adjusted with a simple turn of a screwdriver to take up the slack in the mitre groove. This way, you get an exact fit that lasts for years.

Great versatility

This 762 mm long rod has fixing holes every 102 mm along its length, so that you can fix your templates in different ways.

PRODUCT INFORMATION

- For standard mitre grooves of 19 x 9 mm
 - Equipped with 8 nylon set screws
 - Mounting holes every 127 mm
 - 762 mm total length

DESCRIPTION

This durable rod fits standard mitre grooves of 19 x 9 mm. With eight nylon screws along the entire length of the rod to avoid any play in the groove. Mounting holes are provided every 127 mm. Ideal for fixing moulds and clamps. **Mitre gauge with a precise fit.** If you are making jigs and fixtures for your table saw, router table, band saw or other tool with a mitre slot, you need a rod that fits precisely (in a standard 9 mm x 19 mm mitre slot) and glides smoothly. This one does both **Proven performance** This is the same adjustable bar that comes standard on our precision miter guide, giving you the same proven accuracy on any jigs you make. **Built-in adjustability** Six nylon screws along the entire length of the rod can be adjusted with a simple turn of a screwdriver to take up the slack in the mitre groove. This way, you get an exact fit that lasts for years. **Great versatility** This 762 mm long rod has fixing holes every 102 mm along its length, so that you can fix your templates in different ways.

No video available for this product!

DOWNLOADS

No download available.

ADDITIONAL INFORMATION

Weight	0,5 kg
Dimensions	76,2 cm