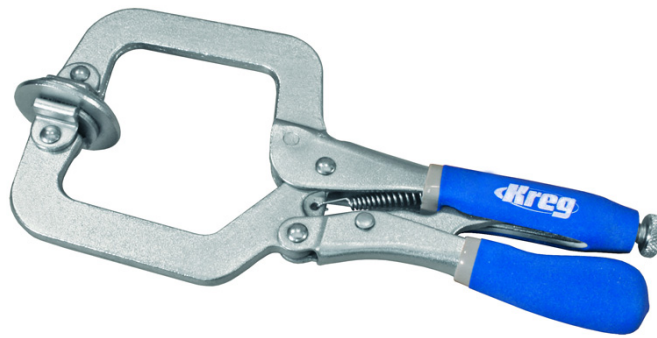


KREG CLASSIC 3" (76 MM) FACE CLAMP



€32,99 (excl. VAT)

This easy-to-use, compact clamp fits easily into tight spaces.

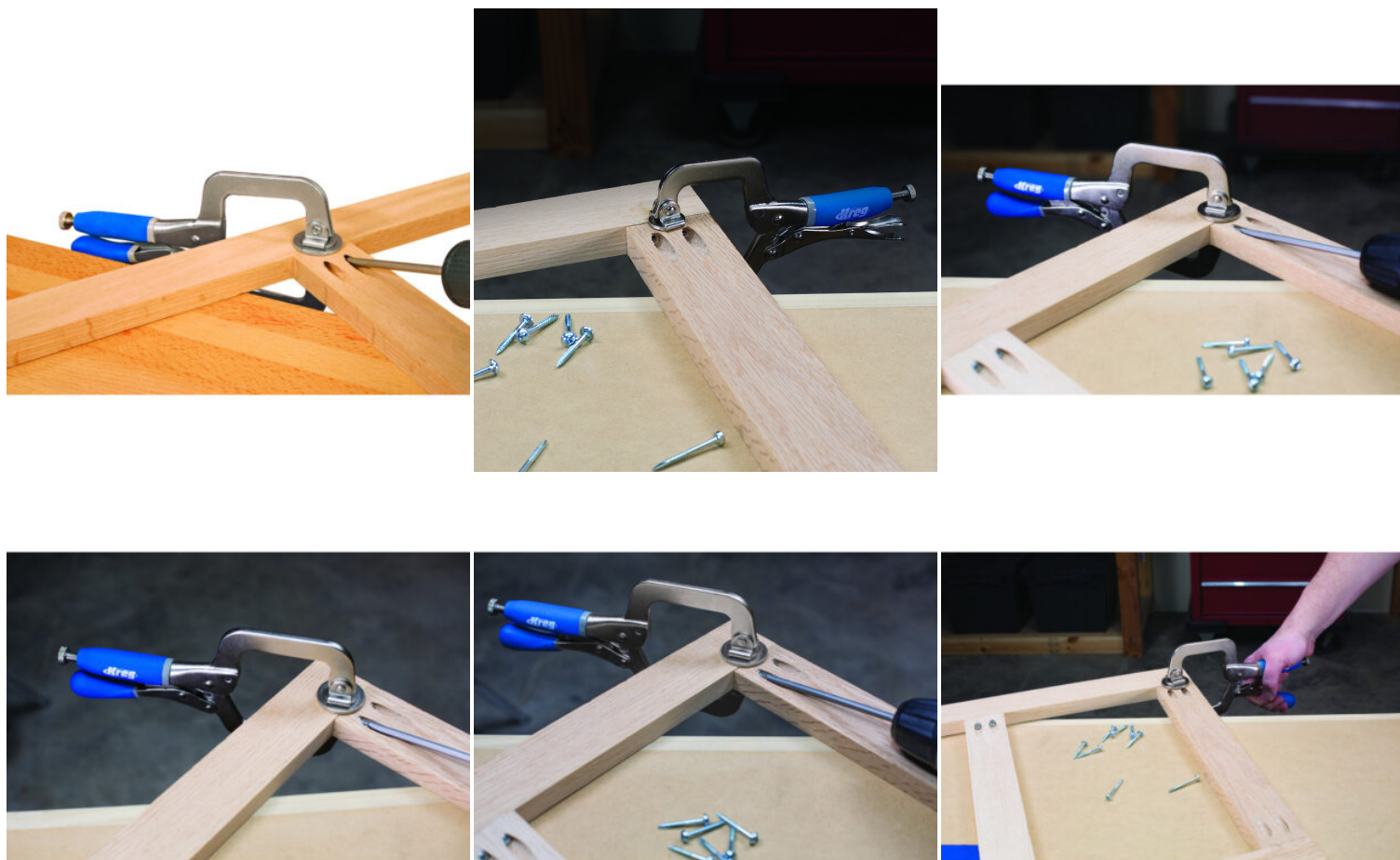
It has a reach of 76 mm and clamps materials up to 70 mm thick.

Classic Face Clamps are designed for creating perfectly flush Kreg joints, and they work great for lots of other shop and project tasks that require solid clamping without marring. These clamps have large clamp pads that distribute clamping force evenly, and hold pieces flush during assembly. When used in Kreg joinery, the extra-large clamp face gets positioned on the 'show' side of the joint.

Classic Face Clamps have a simple screw that adjusts the clamp to match material thickness, plus comfortable padded handles. They are compatible with the Kreg Jig R3's Clamp Pad Adapter.

SKU: KRE-KHC-PREMIUM

GALERIJAFBEELDINGEN



This easy-to-use, compact clamp fits easily into tight spaces.

It has a reach of 76 mm and clamps materials up to 70 mm thick.

Classic Face Clamps are designed for creating perfectly flush Kreg joints, and they work great for lots of other shop and project tasks that require solid clamping without marring. These clamps have large clamp pads that distribute clamping force evenly, and hold pieces flush during assembly. When used in Kreg joinery, the extra-

large clamp face gets positioned on the 'show' side of the joint.

Classic Face Clamps have a simple screw that adjusts the clamp to match material thickness, plus comfortable padded handles. They are compatible with the Kreg Jig R3's Clamp Pad Adapter.

PRODUCT INFORMATION

- Clamping capacity: material up to 70 mm thick
 - Range: 76 mm (3")
- Large clamp pads distribute clamping force evenly and keep pieces flush
 - Available in 2 sizes: 51 mm (2") and 76 mm (3")
- Simple screw to adjust the clamp to the material thickness
 - Padded handles provide greater comfort

DESCRIPTION

This easy-to-use, compact clamp fits easily into tight spaces. It has a reach of 76 mm and clamps materials up to 70 mm thick. Classic Face Clamps are designed for creating perfectly flush Kreg joints, and they work great for lots of other shop and project tasks that require solid clamping without marring. These clamps have large clamp pads that distribute clamping force evenly, and hold pieces flush during assembly. When used in Kreg joinery, the extra-large clamp face gets positioned on the 'show' side of the joint. Classic Face Clamps have a simple screw that adjusts the clamp to match material thickness, plus comfortable padded handles. They are compatible with the Kreg Jig R3's Clamp Pad Adapter.

No video available for this product!

DOWNLOADS

No download available.

ADDITIONAL INFORMATION

Weight	0,4 kg
Clamping capacity	70 mm

Reach

76 mm