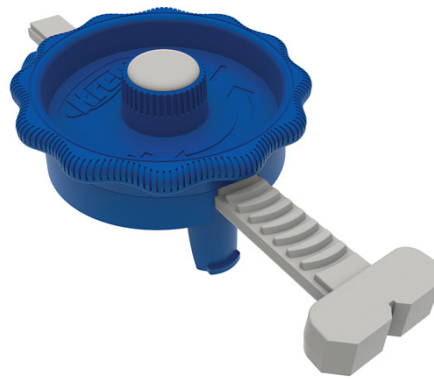


KREG IN-LINE WORKBENCH CLAMP 360 DEGREES ROTATABLE



€26,99 (excl. VAT)

The in-line clamp applies lateral pressure so it never gets in the way while you work. The pin fits into any 19 mm hole and holds the clamp in place. So with this clamp, you get more out of any workbench with holes or other work surfaces that you can drill holes in. The in-line clamp is also a perfect addition to the mobile work centre. It is the versatile and powerful helping hand you need for your DIY and woodworking tasks: gluing, sanding, painting and finishing, routing, assembling, etc. This clamp exerts up to 110 kg of clamping force. You can turn it to different angles and use it for workpieces of almost any shape.

SKU: KRE-KBCIC

GALERIJAFBEELDINGEN



The in-line clamp applies lateral pressure so it never gets in the way while you work. The pin fits into any 19 mm hole and holds the clamp in place. So with this clamp, you get more out of any workbench with holes or other work surfaces that you can drill holes in. The in-line clamp is also a perfect addition to the mobile work centre. It is the versatile and powerful helping hand you need for your DIY and woodworking tasks: gluing, sanding, painting and finishing, routing, assembling, etc. This clamp exerts up to 110 kg of clamping force. You can turn it to different angles and use it for workpieces of almost any shape.

PRODUCT INFORMATION

- 360° turnable
- Fits into any 19 mm hole
- 110 kg clamping force

DESCRIPTION

The in-line clamp applies lateral pressure so it never gets in the way while you work. The pin fits into any 19 mm hole and holds the clamp in place. So with this clamp, you get more out of any workbench with holes or other work surfaces that you can drill holes in. The in-line clamp is also a perfect addition to the mobile work centre. It is the versatile and powerful helping hand you need for your DIY and woodworking tasks: gluing, sanding, painting and finishing, routing, assembling, etc. This clamp exerts up to 110 kg of clamping force. You can turn it to different angles and use it for workpieces of almost any shape.

DOWNLOADS

No download available.

ADDITIONAL INFORMATION

Weight 0,3 kg