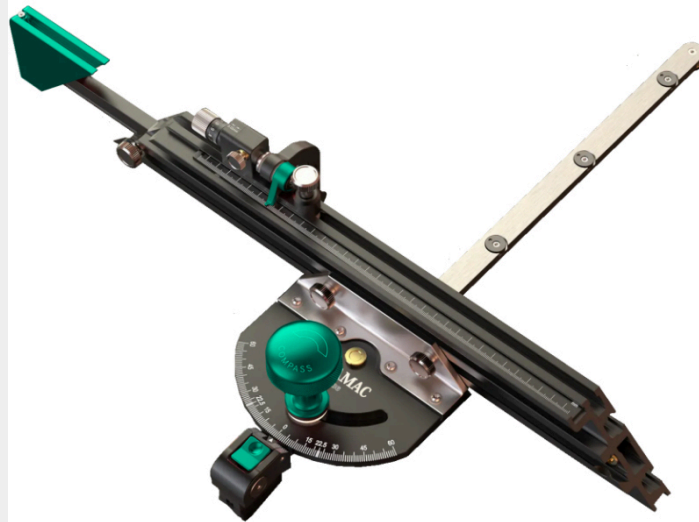


MITER GAUGE ITAMAC XACT 36



€495,04 (excl. VAT)

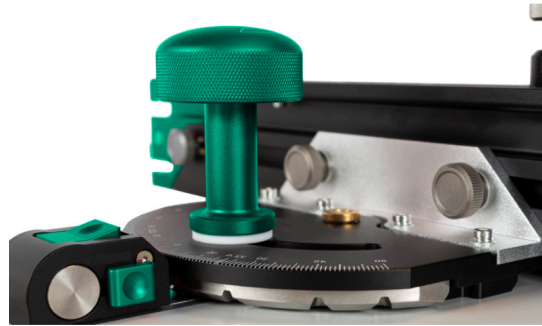
Miter gauge of the extra premium class. Finely adjustable flip-stop, machined standard angles, extendable stop extension

If you are looking for accessories for your saw table or router table from the "uncompromising" category, you have just found it!

The ITAMAC Xact 36 definitely belongs in the "non-plus-ultra class" in terms of adjustability, precision, stability and finish. Absolutely unrivalled miter gauge!

SKU: IT-XACT36

GALERIJAFBEELDINGEN



Miter gauge of the extra premium class. Finely adjustable flip-stop, machined standard angles, extendable stop extension

If you are looking for accessories for your saw table or router table from the "uncompromising" category, you have just found it!

The ITAMAC Xact 36 definitely belongs in the "non-plus-ultra class" in terms of adjustability, precision, stability and finish. Absolutely unrivalled miter gauge!

PRODUCT INFORMATION

- Made to last: anodised aluminium (6061-T6), stainless steel and brass.
 - CNC-machined to ensure the highest possible precision
- Backlash-free adjustable gridded standard angles, thanks to tapered snap-in bushings
 - The "lock function" allows the shielded corners to be locked within the corner area
- The locking function can be easily unlocked with two fingers to set individual angles
 - Precision scale (metric) on the stop profile guarantees perfect adjustability
 - All scales are very precisely laser marked
- Screw-in stop pin enables three different positions for individual stop situations

- Fits all 19mm T-slots, such as in the ITAMAC Panthera table saws and many more!

DESCRIPTION

Miter gauge of the extra premium class. Finely adjustable flip-stop, machined standard angles, extendable stop extension If you are looking for accessories for your saw table or router table from the "uncompromising" category, you have just found it! The ITAMAC Xact 36 definitely belongs in the "non-plus-ultra class" in terms of adjustability, precision, stability and finish. Absolutely unrivalled miter gauge!

No video available for this product!

DOWNLOADS

No download available.

ADDITIONAL INFORMATION

Weight	4 kg
Dimensions	50 cm
Angle range	+/- 60°
Fixed mitres	-60°, -45°, -22,5°, 0°, 22,5°, 45°, 60°
Guide profile	460 x 19 x 9 mm
Fine-tuning accuracy	0,02 mm