

OUTLET | BELMASH - CPL 200 CARPENTER'S PLANER



~~€537,19~~ Original price was:
~~€537,19.~~ €376,03 Current price is: €376,03.
(excl. VAT)

SHOWROOM MODEL - NEW

The CPL 200 carpenter's planer is made of aluminium and steel, and has an all-steel planing spindle with two knives.

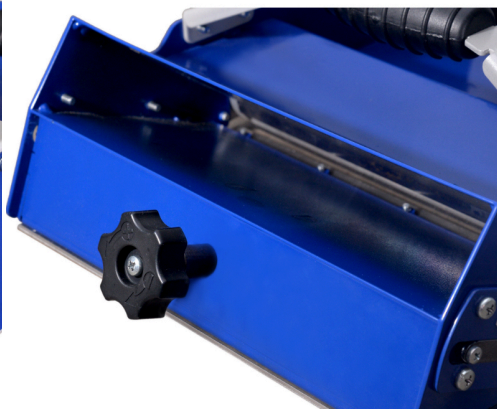
The powerful motor, the sharp front edge and the front shavings exhaust make the machine perfectly operable while working with both dry and humid wood without clamping the slot due to the large amount of shavings. This allows for the planing of long beams in one go.

The planer's depth of cut is easily adjusted by a rotary knob from 0 to 3mm, which ensures that it continues to work smoothly and accurately even after long periods of use.

The CPL 200 is the perfect partner for every carpenter on a construction site.

SKU: OUTLET-BEL-200CPL

GALERIJAFBEELDINGEN



The CPL 200 carpenter's planer is made of aluminium and steel, and has an all-steel planing spindle with two knives.

The powerful motor, the sharp front edge and the front shavings exhaust make the machine perfectly operable while working with both dry and humid wood without clamping the slot due to the large amount of shavings. This allows for the planing of long beams in one go.

The planer's depth of cut is easily adjusted by a rotary knob from 0 to 3mm, which ensures that it continues to work smoothly and accurately even after long periods of use.

The CPL 200 is the perfect partner for every carpenter on a construction site.

PRODUCT INFORMATION

- Steel construction
- Powerful motor 1500 W
 - High speed
- Planing width 200 mm
- Perfect for working with both dry and humid wood
- Extraction of shavings through the large exhaust at the front, allowing for the planing of long beams in one go
- Planing depth (0 – 3 mm) easily adjustable by means of a rotary knob

DESCRIPTION

The CPL 200 carpenter's planer is made of aluminium and steel, and has an all-steel planing spindle with two knives. The powerful motor, the sharp front edge and the front shavings exhaust make the machine perfectly operable while working with both dry and humid wood without clamping the slot due to the large amount of shavings. This allows for the planing of long beams in one go. The planer's depth of cut is easily adjusted by a rotary knob from 0 to 3mm, which ensures that it continues to work smoothly and accurately even after long periods of use. The CPL 200 is the perfect partner for every carpenter on a construction site.

No video available for this product!

DOWNLOADS

No download available.

ADDITIONAL INFORMATION

Weight	14 kg
Input Power	1500W
Voltage	230 V
Planing width	200 mm

Planing depth	0-3 mm
Speed planer	12.400
Length	490mm