

PANEL SAW JUMBO J30P

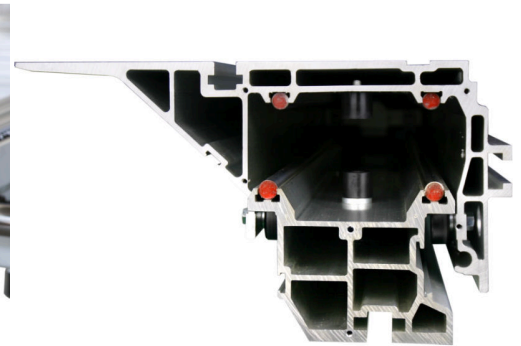
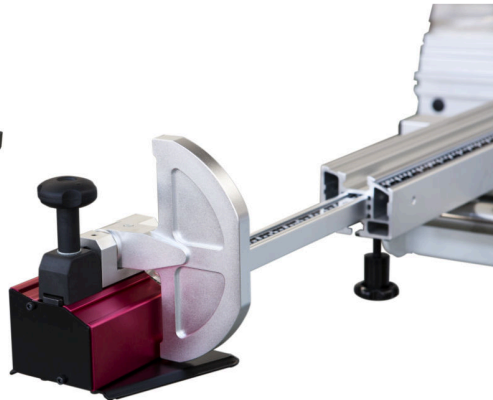
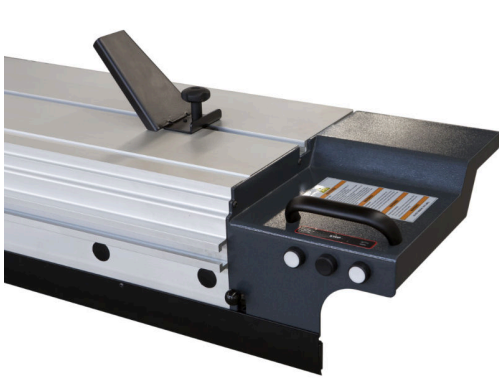
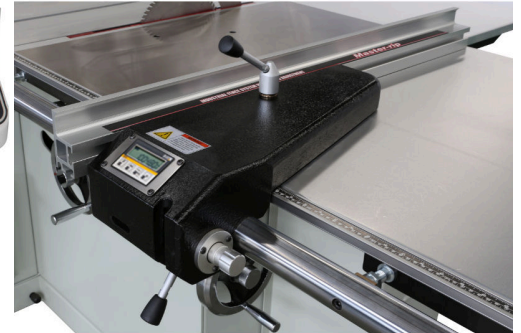


€11 .983,47 (excl. VAT)

The Jumbo P series panel saws exemplify proven technology, high-quality workmanship and ergonomic design.

SKU: HAR-J30-P

GALERIJAFBEELDINGEN



The Jumbo P series panel saws exemplify proven technology, high-quality workmanship and ergonomic design.

Les scies à panneaux de la gamme Jumbo P sont équipées d'un système d'entraînement/contrôle Siemens pour le réglage de la lame. They feature a 7.5 HP ABB motor with 1-second brake. The operator can control the saw height and saw tilt very easily with the buttons on the panel at the front of the machine. Cutting height and tilt positions are accurately displayed on the Siemens LED display. This ensures simplified operation and increased job satisfaction. In addition, they feature a moving control panel in the sliding table for optimum ease of operation and safety.

PRODUCT INFORMATION

- Extreme craftsmanship and operational experience
- Exclusive honeycomb structure of the sliding table provides excellent carrying capacity and stability
 - Floating 'Shark' cover for best safety and dust extraction
 - Groove cuts up to 15 mm possible
 - Laser-cut heavy steel frame with quality powder coating
 - Central Siemens control panel on body
 - Lateral guide with digital ELGO display
- Electronically controlled saw blade height adjustment with 0.1 mm accuracy
- Electronically controlled saw blade tilt adjustment with 0.1 degree accuracy
- Dynamically balanced spindles operate almost silently and produce hardly any vibration
 - Precision ball bearing and linear guide for the lateral guide
 - Siemens start-stop control system in sliding table
- 410 mm wide and **3200 mm** long sliding table made of extremely strong aluminum used in aviation.
 - Unique mitre guide with Harvey's unique 'compass system' positioning
 - User-friendly control panel
 - Side tables with stainless steel cover layer and honeycomb structure
 - 400 V – 7.5 HP main motor with mechanical 1-second brake
 - Adjustable feet for uneven floor

DESCRIPTION

The Jumbo P series panel saws exemplify proven technology, high-quality workmanship and ergonomic design. Les scies à panneaux de la gamme Jumbo P sont équipées d'un système d'entraînement/contrôle Siemens pour le réglage de la lame. They feature a 7.5 HP ABB motor with 1-second brake. The operator can control the saw height and saw tilt very easily with the buttons on the panel at the front of the machine. Cutting height and tilt positions are accurately displayed on the Siemens LED display. This ensures simplified operation and increased job satisfaction. In addition, they feature a moving control panel in the sliding table for optimum ease of operation and safety.

No video available for this product!

DOWNLOADS

No download available.

ADDITIONAL INFORMATION

Weight	900 kg
Worktable	558 x 800 mm
Dimensions sliding table	410 x 3200 mm
Length of sliding table	3300 mm
Diameter of main saw blade	315 mm
Bore of main saw blade	30 mm
Diameter of scoring blade	120 mm
Bore of scoring blade	20 mm
Cutting depth 45°	76 mm
Cutting depth 90 °	102 mm
Voltage	400 V
Saw blade speed	4500 rpm
Speed of scoring blade	8000 rpm
Motor	7.5 HP
Motor of the scoring unit	1 HP
Max. lateral guide	1270 mm