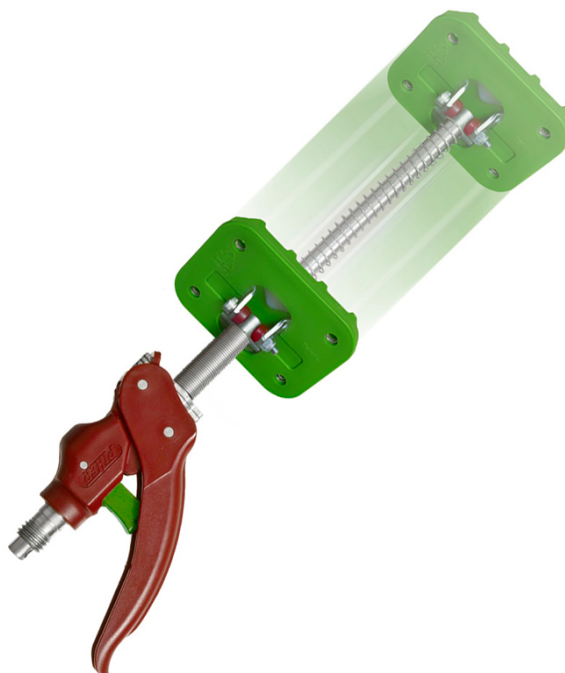


## PIHER - ARM + ONE-HAND EXTENSION FOR MULTIPROP

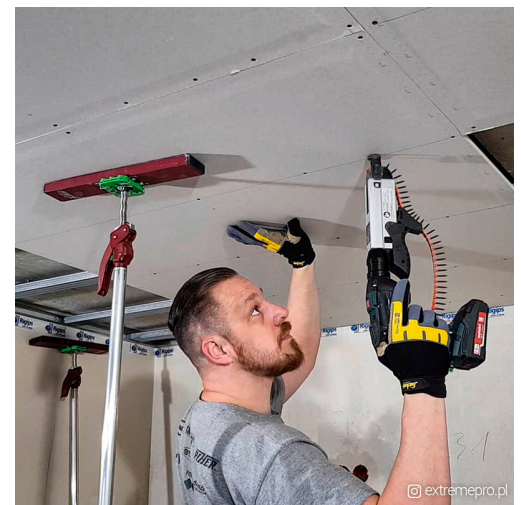
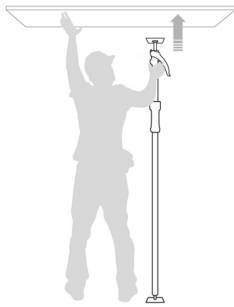
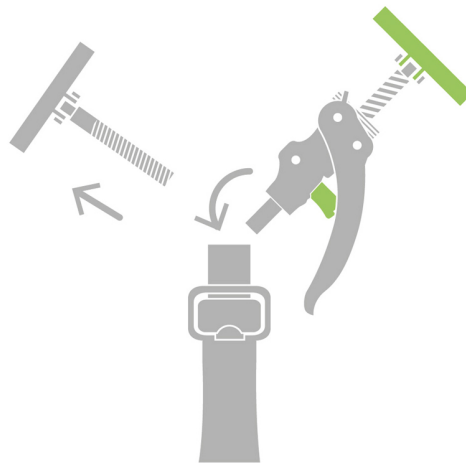
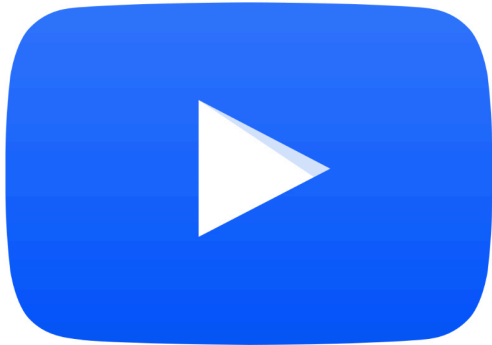


**€27,82 (excl. VAT)**

The Arm + ensures that your Multiprop telescopic support can be operated with one hand.  
Handy to place a false ceiling, for example!

**SKU:** PIH-34089

### GALERIJAFBEELDINGEN



The Arm + ensures that your Multiprop telescopic support can be operated with one hand. It is mounted in place of the standard head.

One click with your finger and the Arm + shoots up to 18cm to already clamp.

Then you can simply clamp harder by pressing the handle. This gives you a hand free at all times.

Useful when, for example, installing a false ceiling.

Like the standard head, they feature non-slip pads that can be tilted to any angle, are fully weather resistant and have a nylon fiberglass reinforced handle.

They are compatible with any version of the Multiprop telescopic supports.

## PRODUCT INFORMATION

- Easy to use with one hand
  - 100kg load capacity
- Made of steel with nylon and fiberglass reinforced handle
  - Tilting anti-slip pads tiltable to any angle
  - Compatible with all Multiprops

## DESCRIPTION

The Arm + ensures that your Multiprop telescopic support can be operated with one hand. It is mounted in place of the standard head. One click with your finger and the Arm + shoots up to 18cm to already clamp. Then you can simply clamp harder by pressing the handle. This gives you a hand free at all times. Useful when, for example, installing a false ceiling. Like the standard head, they feature non-slip pads that can be tilted to any angle, are fully weather resistant and have a nylon fiberglass reinforced handle. They are compatible with any version of the Multiprop telescopic supports.

## DOWNLOADS

No download available.

## ADDITIONAL INFORMATION

<b>Weight</b>	0,51 kg
<b>Clamping capacity</b>	18cm
<b>Clamping force</b>	100kg