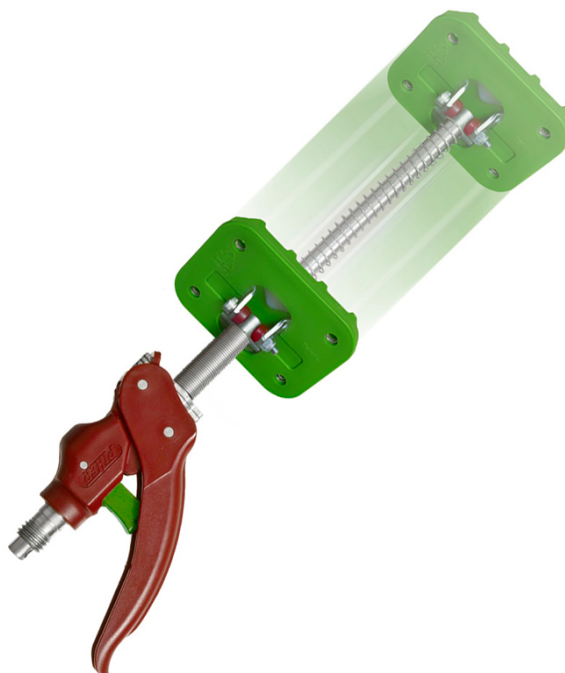


PIHER - ARM + ONE-HAND EXTENSION FOR MULTIPROP

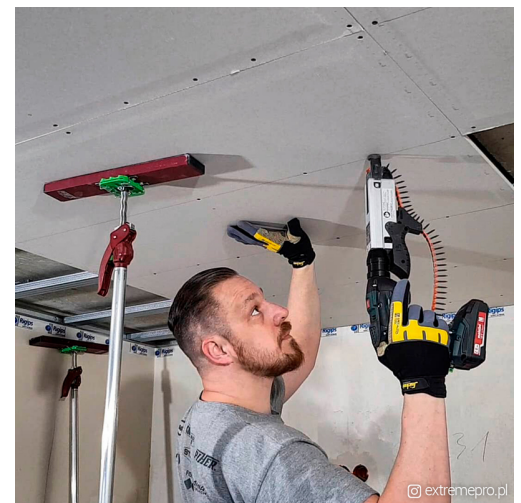
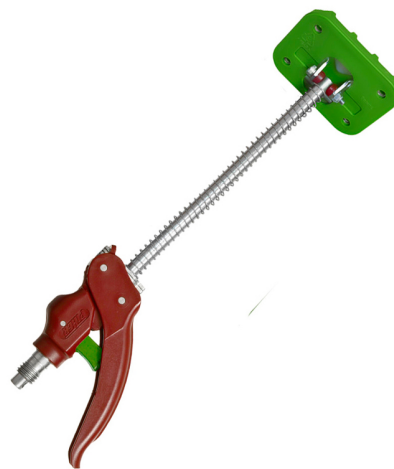
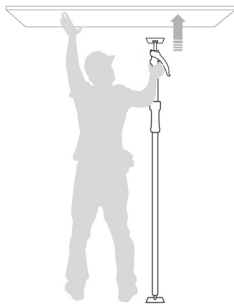
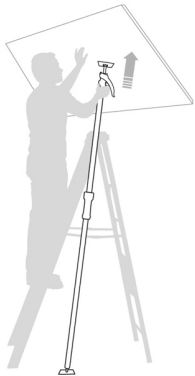
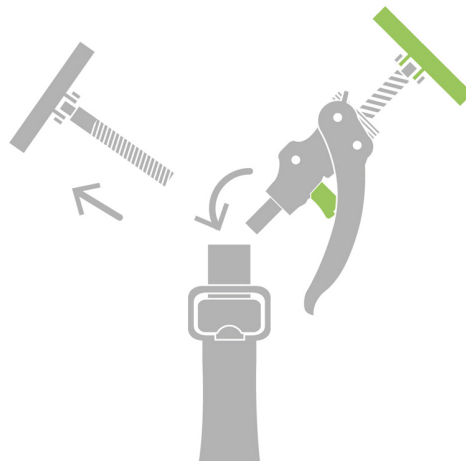


€27,82 (excl. VAT)

The Arm + ensures that your Multiprop telescopic support can be operated with one hand.
Handy to place a false ceiling, for example!

SKU: PIH-34089

GALERIJAFBEELDINGEN



The Arm + ensures that your Multiprop telescopic support can be operated with one hand. It is mounted in place of the standard head.

One click with your finger and the Arm + shoots up to 18cm to already clamp.

Then you can simply clamp harder by pressing the handle. This gives you a hand free at all times.

Useful when, for example, installing a false ceiling.

Like the standard head, they feature non-slip pads that can be tilted to any angle, are fully weather resistant and have a nylon fiberglass reinforced handle.

They are compatible with any version of the Multiprop telescopic supports.

PRODUCT INFORMATION

- Easy to use with one hand
 - 100kg load capacity
- Made of steel with nylon and fiberglass reinforced handle
 - Tilting anti-slip pads tiltable to any angle
 - Compatible with all Multiprops

DESCRIPTION

The Arm + ensures that your Multiprop telescopic support can be operated with one hand. It is mounted in place of the standard head. One click with your finger and the Arm + shoots up to 18cm to already clamp. Then you can simply clamp harder by pressing the handle. This gives you a hand free at all times. Useful when, for example, installing a false ceiling. Like the standard head, they feature non-slip pads that can be tilted to any angle, are fully weather resistant and have a nylon fiberglass reinforced handle. They are compatible with any version of the Multiprop telescopic supports.

DOWNLOADS

No download available.

ADDITIONAL INFORMATION

Weight	0,51 kg
Clamping capacity	18cm
Clamping force	100kg