

PIHER - LIGHT PAL CLAMP





€15,93 - €17,65 (excl. VAT)

This unique Light Pal quick-release clamp is super lightweight and works 5 times faster than traditional glue clamps.
Inside, the mechanism works with a steel pin and 2 steel brake plates for professional use and longevity.

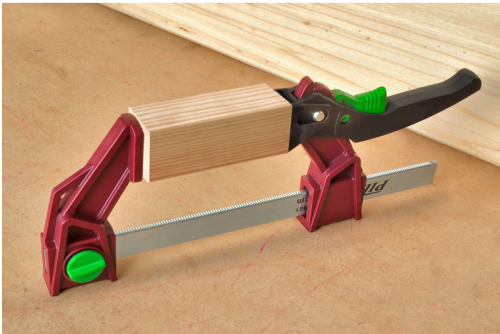
The clamping force is 120Kg and it is available in 16cm and 30cm clamping range.

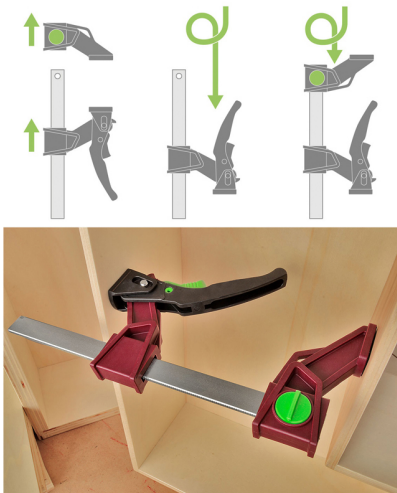
SKU: N/A

VARIATIONS

Image	SKU	Description	Clamping capacity	Price
	PIH-30901		16cm	€15,93 (excl. VAT)
	PIH-30903		30cm	€17,65 (excl. VAT)

GALERIJAFBEELDINGEN





This unique Light Pal quick-release clamp is super lightweight and works 5 times faster than traditional glue clamps.

Inside, the mechanism works with a steel pin and 2 steel brake plates for professional use and longevity.

The jaws are provided with TPR caps for extra grip and to protect the material to be clamped. This quick clamp can also be used as a compact panel clamp because the quick clamp has 2 support surfaces.

The top can also be used horizontally as a support surface.

The clamping force is 120Kg and it is available in 16cm and 30cm clamping range.

PRODUCT INFORMATION

- Nylon and fiberglass jaws
- Zinc coated shaft of 20x5mm
 - 120kg clamping force
 - Two steel brake plates
- TPR protective caps on both jaws

DESCRIPTION

This unique Light Pal quick-release clamp is super lightweight and works 5 times faster than traditional glue clamps. Inside, the mechanism works with a steel pin and 2 steel brake plates for professional use and longevity. The jaws are provided with TPR caps for extra grip and to protect the material to be clamped. This quick clamp can also be used as a compact panel clamp because the quick clamp has 2 support surfaces. The top can also be used horizontally as a support surface. The clamping force is 120Kg and it is available in 16cm and 30cm clamping range.

DOWNLOADS

No download available.

ADDITIONAL INFORMATION

Weight	1 kg
Clamping capacity	16cm, 30cm
Clamping depth	8cm
Clamping force	120kg