

## PIHER - MAXIPRESS F



**€32,21 - €74,81 (excl. VAT)**

The Maxipress is a cast iron clamp with fully protected double screw thread. Maximum clamping force 900kg.

Available in different lengths

**SKU:** N/A

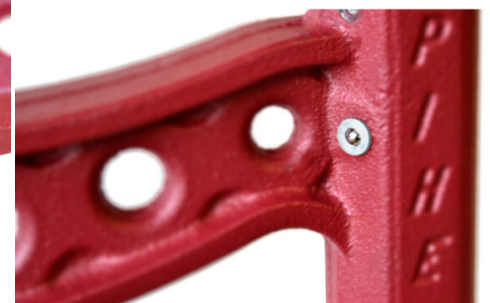
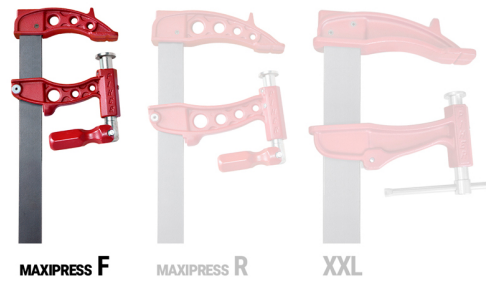
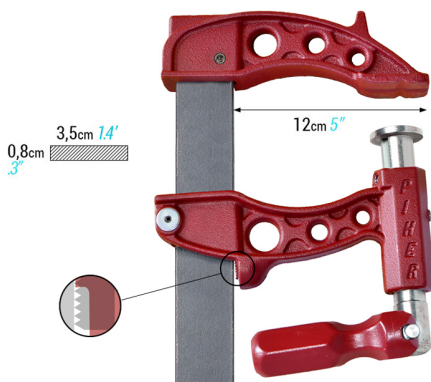
### VARIATIONS

| Image   | SKU       | Description | Clamping capacity | Price              |
|---|-----------|-------------|-------------------|--------------------|
|    | PIH-60020 |             | 20cm              | €32,21 (excl. VAT) |
|    | PIH-60030 |             | 30cm              | €35,59 (excl. VAT) |
|  | PIH-60040 |             | 40cm              | €38,71 (excl. VAT) |
|  | PIH-60050 |             | 50cm              | €41,94 (excl. VAT) |

| Image   | SKU       | Description | Clamping capacity | Price              |
|---|-----------|-------------|-------------------|--------------------|
|    | PIH-60060 |             | 60cm              | €45,00 (excl. VAT) |
|    | PIH-60080 |             | 80cm              | €51,98 (excl. VAT) |
|   | PIH-60100 |             | 100cm             | €58,74 (excl. VAT) |
|  | PIH-60120 |             | 120cm             | €64,45 (excl. VAT) |

| Image   | SKU       | Description | Clamping capacity | Price              |
|---|-----------|-------------|-------------------|--------------------|
|  | PIH-60150 |             | 150cm             | €74,81 (excl. VAT) |

### GALERIJAFBEELDINGEN



The Maxipress is a cast iron clamp with fully protected double screw thread, which protects it against external influences: pieces of concrete, steel splinter, welding particles, etc. The double thread multiplies both speed and pressure capacity. The double thread provides a completely straight upward movement without torsion. In the rotating system of the protected double screw thread, a recess is provided to grease the screw. The Maxipress has round-shaped claws that allow you to work around corners or protrusions. The Maxipress is an extra resistant rolled steel bar treated with anti-rust. This clamp has a cast iron basin coated with epoxy paint, as well as a positioning system to prevent free fall of the claw. The Maxipress is also equipped with an ergonomic handle with 3D joint position.

### PRODUCT INFORMATION

- Ergonomic handle with 3D joint position
- System with *fully protected screw thread*:

Doubles both speed and pressure capacity thanks to the double thread with triangular teeth

Completely straight upward movement without torsion

More pressure and grip than a standard head, even during angled clamping

Protection against external influences: pieces of concrete, steel splint, welding particles, etc.

- Position system to prevent free fall of the claw
- A recess is provided in the turning mechanism for greasing the screw
- Round-shaped claws that allow to work around corners or protrusions
  - Ribbed fixed support for ideal grip of pipes, profiles etc.
    - Anti-slip stop system on the moving jaw
  - Extra resistant rolled steel bar (90kg / mm<sup>2</sup>)
    - Anti-rust treated

### DESCRIPTION

The Maxipress is a cast iron clamp with fully protected double screw thread, which protects it against external influences: pieces of concrete, steel splinter, welding particles, etc. The double thread multiplies both speed and pressure capacity. The double thread provides a completely straight upward movement without torsion. In the rotating system of the protected double screw thread, a recess is provided to grease the screw. The Maxipress has round-shaped claws that allow you to work around corners or protrusions. The Maxipress is an extra resistant rolled steel bar treated with anti-rust. This clamp has a cast iron basin coated with epoxy paint, as well as a positioning system to prevent free fall of the claw. The Maxipress is also equipped with an

ergonomic handle with 3D joint position.

### DOWNLOADS

No download available.

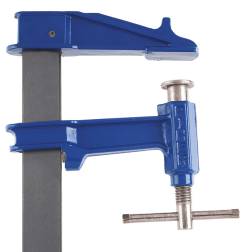
### ADDITIONAL INFORMATION

|                          |   |
|--------------------------|---|
| <b>Weight</b>            | N/A   |
| <b>Clamping capacity</b> | 20cm, 30cm, 40cm, 50cm, 60cm, 80cm, 100cm, 120cm, 150cm |
| <b>Clamping depth</b>    | 12cm  |
| <b>Clamping force</b>    | 900kg   |

### YOU MAY ALSO LIKE...



[PIHER - Maxipress E](#)



[PIHER - Classic clamp  
Mod. R](#)



[PIHER - Classic clamp  
Mod. F](#)



[PIHER - Classic clamp  
Mod. E](#)