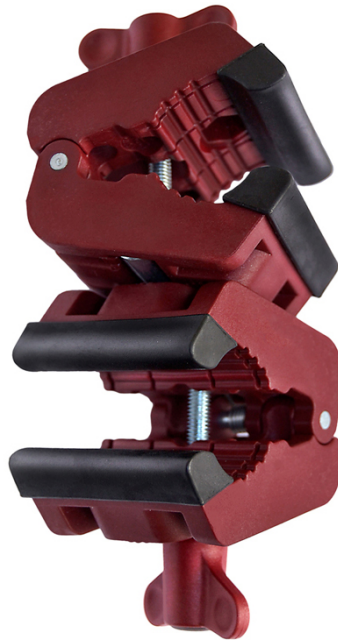


### PIHER - MULTICLAMP DOUBLE FIXED



**€31,08 (excl. VAT)**

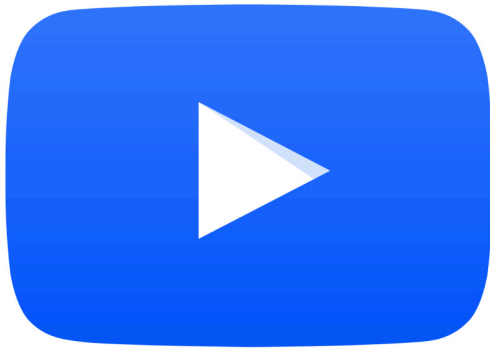
The Multiclamp is designed for use with the PIHER Multiprops telescopic supports, but can of course also be used separately.

Within a few seconds the Multiclamps are screwed onto the telescopic supports and immediately loadable up to 150kg. Made entirely of nylon fiberglass. Steel screw, shaft and reinforcements. Equipped with anti-slip pads. They have different screw holes so you can mount them on any surface.

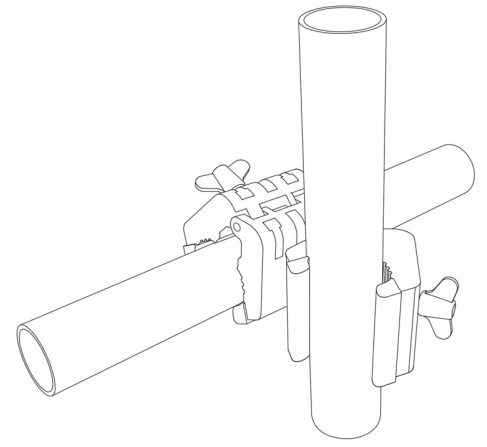
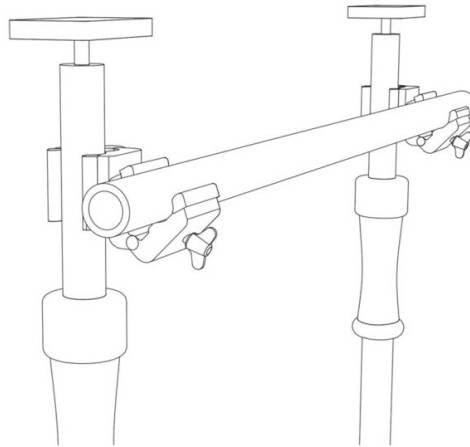
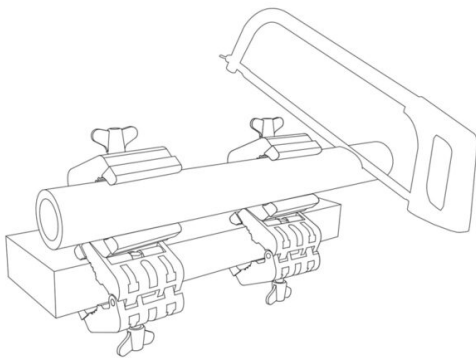
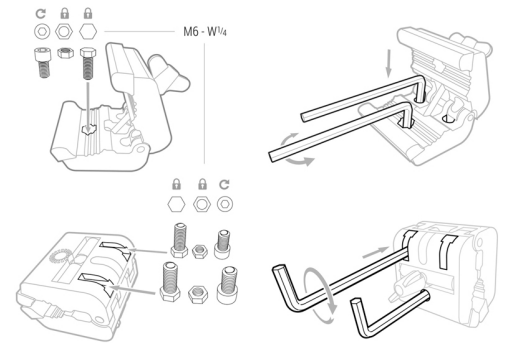
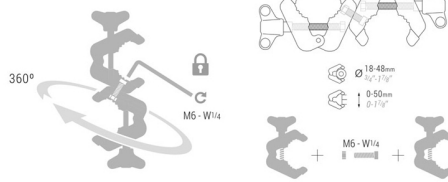
Two Multiclamps connected by an M6 screw with adjustable angle 360 °, to be fixed with the M6 screw.

**SKU:** PIH-34054

## GALERIJAFBEELDINGEN



COD. 34054



The Multiclamp is designed for use with the PIHER Multiprops telescopic supports, but can of course also be used separately.

Within a few seconds the Multiclamps are screwed onto the telescopic supports and immediately loadable up to 150kg.

Two Multiclamps connected by an M6 screw with adjustable angle 360 °, to be fixed with the M6 screw.

The Multiclamps fit on all types of Multiprops or on other pipes and profiles of 18-48mm. You can also use them as a separate small clamp.

Made entirely of nylon fiberglass. Steel screw, shaft and reinforcements. Equipped with anti-slip pads. They have different screw holes so you can mount them on any surface.

Another PIHER product with endless possibilities.

## PRODUCT INFORMATION

- Nylon fiberglass jaws
- Two Multiclamps connected by an M6 screw with adjustable angle 360 °, to be fixed with the M6 screw.
  - Clamping force up to 150kg
  - For flat and curved surfaces, pipes
    - Anti-slip pads
- Multiple screw and nut holes (M6, M8, ...)

## DESCRIPTION

The Multiclamper is designed for use with the PIHER Multiprops telescopic supports, but can of course also be used separately. Within a few seconds the Multiclamps are screwed onto the telescopic supports and immediately loadable up to 150kg. Two Multiclamps connected by an M6 screw with adjustable angle 360 °, to be fixed with the M6 screw. The Multiclamps fit on all types of Multiprops or on other pipes and profiles of 18-48mm. You can also use them as a separate small clamp. Made entirely of nylon fiberglass. Steel screw, shaft and reinforcements. Equipped with anti-slip pads. They have different screw holes so you can mount them on any surface. Another PIHER product with endless possibilities.

## DOWNLOADS

No download available.

## ADDITIONAL INFORMATION

<b>Weight</b>	0,44 kg
<b>Clamping force</b>	150kg
<b>Clamping capacity</b>	5cm