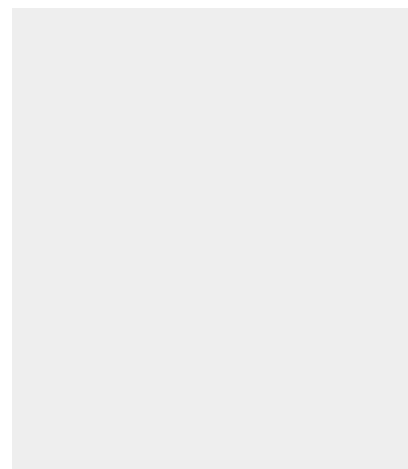
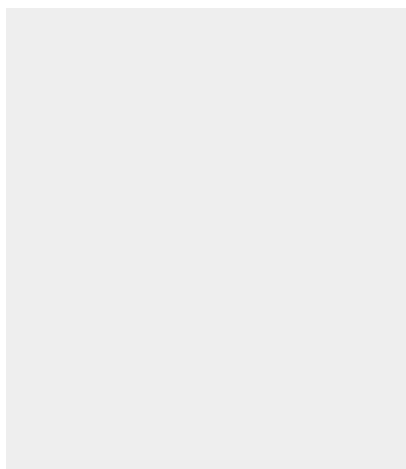


PIHER - TCM ACCESSORY FOR WORKBENCHES

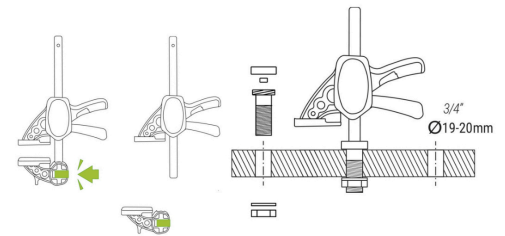
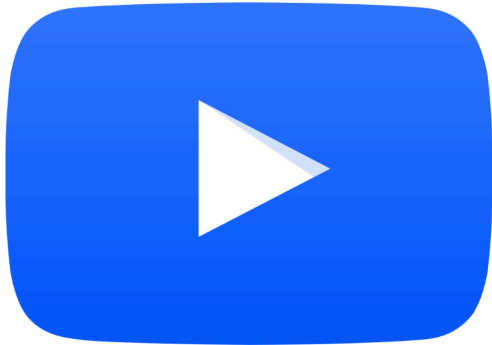


€24,97 (excl. VAT)

Using this accessory, you can easily use Piher's Mini Quick on workbenches with Ø 19 mm or Ø 20 mm holes. By removing one of the jaws of the Mini Quick, you can easily mount the rod in the accessory on the workbench, or mount the moving jaw horizontally. So this accessory can be used either horizontally or vertically, depending on your preference.

SKU: PIH-19130

GALERIJAFBEELDINGEN



Using this accessory, you can easily use Piher's Mini Quick on workbenches with Ø 19 mm or Ø 20 mm holes. By removing one of the jaws of the Mini Quick, you can easily mount the rod in the accessory on the workbench, or mount the moving jaw horizontally. So this accessory can be used either horizontally or vertically, depending on your preference.

PRODUCT INFORMATION

- Made from steel
- To be used with the PIHER Mini Quick clamps
 - Both vertically and horizontally
 - For 19 and 20 mm holes
- Maximum worktop thickness 26 mm

DESCRIPTION

Using this accessory, you can easily use Piher's Mini Quick on workbenches with Ø 19 mm or Ø 20 mm holes. By removing one of the jaws of the Mini Quick, you can easily mount the rod in the accessory on the workbench, or mount the moving jaw horizontally. So this accessory can be used either horizontally or vertically, depending on your preference.

DOWNLOADS

No download available.

ADDITIONAL INFORMATION

Weight

0,16 kg