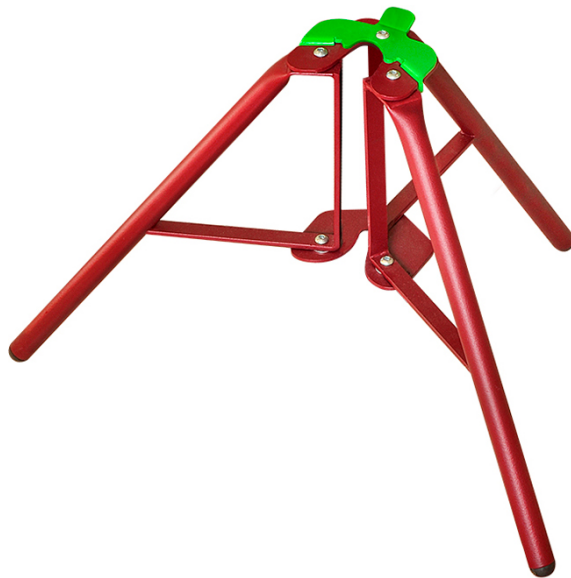


PIHER - TRIPOD FOR MULTIPROPS



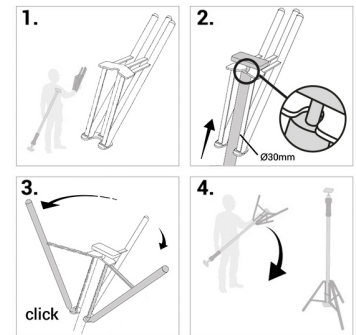
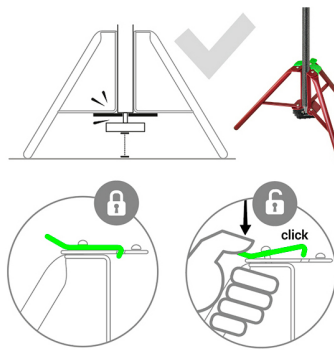
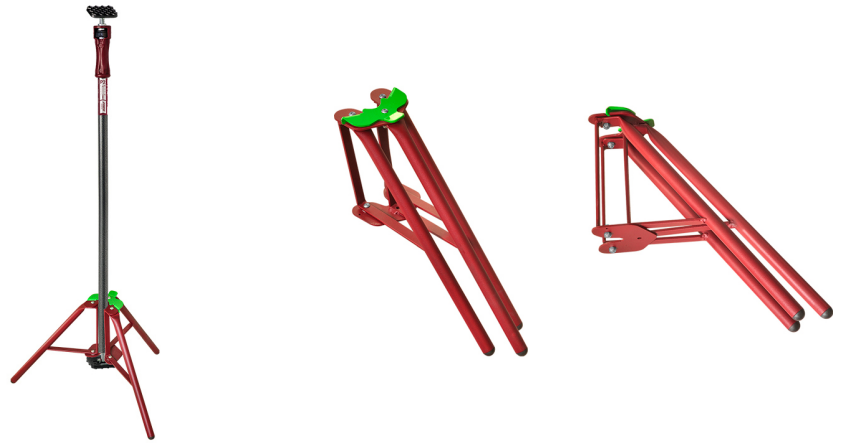
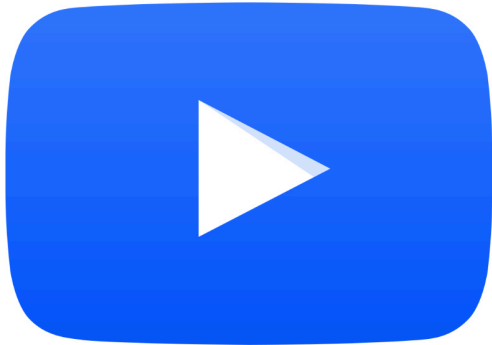
€54,14 (excl. VAT)

Sturdy support specially developed for all PIHER Multiprops.

The tripod has a loading capacity of up to 300 kg and is made of steel pipes and profiles. This new model has a handy installation with a click system to set up and dismantle very quickly.

SKU: PIH-34050

GALERIJAFBEELDINGEN



Sturdy support specially developed for all PIHER Multiprops.
By using this support you can also place a Multiprop when there is no surface at the top.
For example, place a laser on the Multiprop in the middle of an open building.

The tripod has a loading capacity of up to 300 kg and is made of steel pipes and profiles. This new model has a handy installation with a click system to set up and dismantle very quickly.

PRODUCT INFORMATION

- Load capacity up to 300 kg

- Welded pipes and profiles
- For all Multiprops and for 30mm tubes
- New easy installation with click system

DESCRIPTION

Sturdy support specially developed for all PIHER Multiprops. By using this support you can also place a Multiprop when there is no surface at the top. For example, place a laser on the Multiprop in the middle of an open building. The tripod has a loading capacity of up to 300 kg and is made of steel pipes and profiles. This new model has a handy installation with a click system to set up and dismantle very quickly.

DOWNLOADS

No download available.

ADDITIONAL INFORMATION

Weight	1,84 kg
---------------	---------