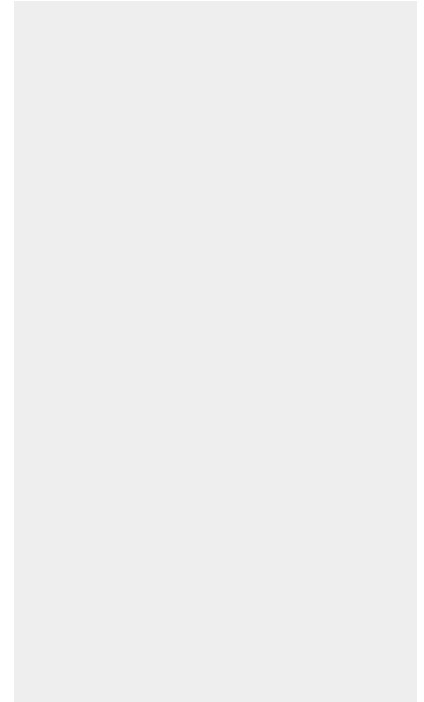
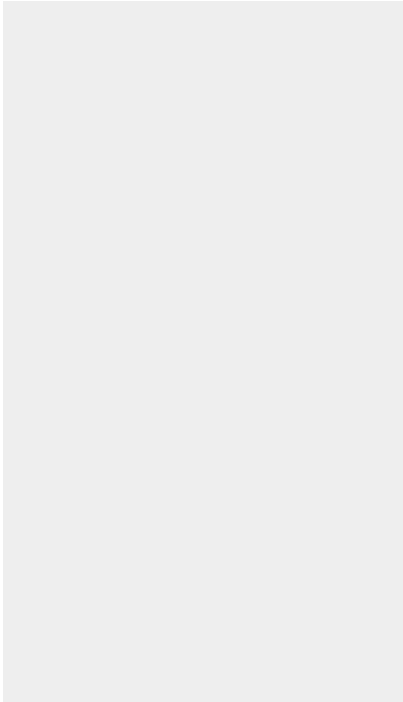


PNEUMATIC DRILLING MACHINE FOR HINGES AND LINE BORING MULTI DRILLER TT5LD3HP

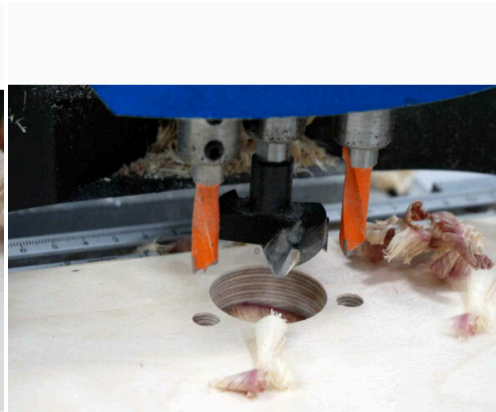
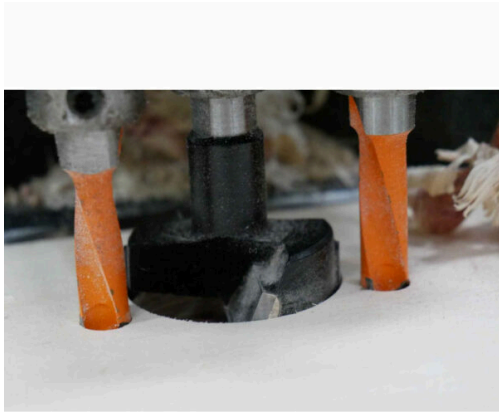
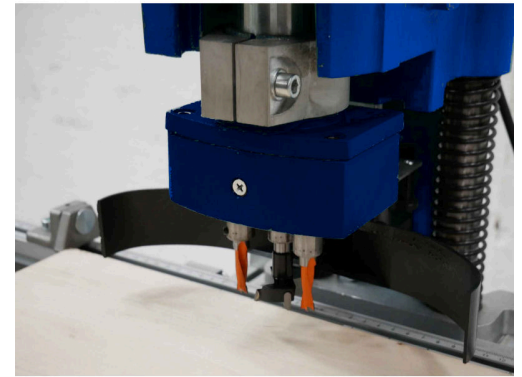
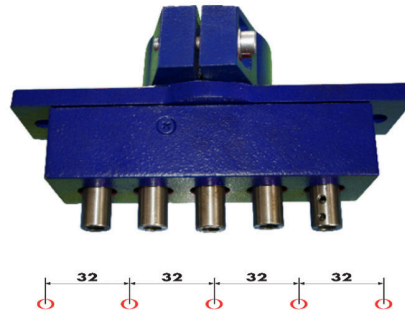
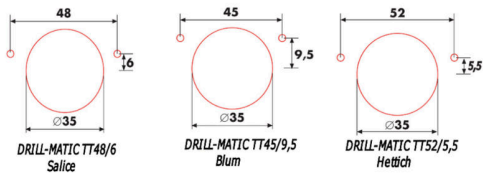


€1 .148,76 (excl. VAT)

This Multi Driller is the affordable solution for your line boring and cabinet hinges, with pneumatic operation! The machine has a powerful induction motor with a module of 5 line borings at a time with pneumatic control.

SKU: 0MHD5LD3HP

GALERIJAFBEELDINGEN



The affordable solution for your line boring and cabinet hinges, with pneumatic operation!

The drilling machine comes standard with a machine base.

The adapters for line boring and cabinet hinges are **optional**.

The machine has a powerful induction motor with a module of 5 line borings at a time with pneumatic control.

The telescopic aluminum guides have convenient "flip stops" with a fine adjustment for setting the edge distance. This leaves your hands free to hold the workpiece securely in place.

The module for line boring can easily be removed to install an adapter for cabinet hinges. This adapter for cabinet hinges is available for Salice, Blum and Hettich hinges. The base features a convenient storage cabinet for your drills and fittings and has a large work surface at the top.

At the back, it has a large extraction outlet, so that you also maintain a clear view of your workpiece.

PRODUCT INFORMATION

- Powerful 1100 W induction motor
 - Pneumatic operation
- Telescopic aluminum fence, equipped with handy flip stops with fine adjustment
 - Very easy change to module for cabinet hinges
- Base with storage cabinet and large work surface on top
 - Extraction outlet 50 mm
 - Rotation speed of the drill: 2840 rpm
 - Large working plane 800 x 400 mm
- Machine is supplied **without** module for line boring or adapter for cabinet hinges (both optional)
 - Drill bits **not** included
- Module for cabinet hinges (Salice, Blum, of Hettich) **(optional)**
 - Adapter to perform 5 line borings at a time**(optional)**

DESCRIPTION

The affordable solution for your line boring and cabinet hinges, with pneumatic operation! The drilling machine comes standard with a machine base. The adapters for line boring and cabinet hinges are **optional**. The machine has a powerful induction motor with a module of 5 line borings at a time with pneumatic control. The telescopic aluminum guides have convenient "flip stops" with a fine adjustment for setting the edge distance. This leaves your hands free to hold the workpiece securely in place. The module for line boring can easily be removed to install an adapter for cabinet hinges. This adapter for cabinet hinges is available for Salice, Blum and Hettich hinges. The base features a convenient storage cabinet for your drills and fittings and has a large work surface at the top. At the back, it has a large extraction outlet, so that you also maintain a clear view of your workpiece.

No video available for this product!

DOWNLOADS

No download available.

ADDITIONAL INFORMATION

Weight	59 kg
Dimensions	820 × 353 × 515 cm
Worktable	800 x 400 mm
Voltage	230 V
Input Power	1100W
Dust collection port	50 mm
Line boring	5 in a row (32 mm apart)
Hinge boring	Blum, Hettich, Salice