

## TILTING TRIMMER FR292R

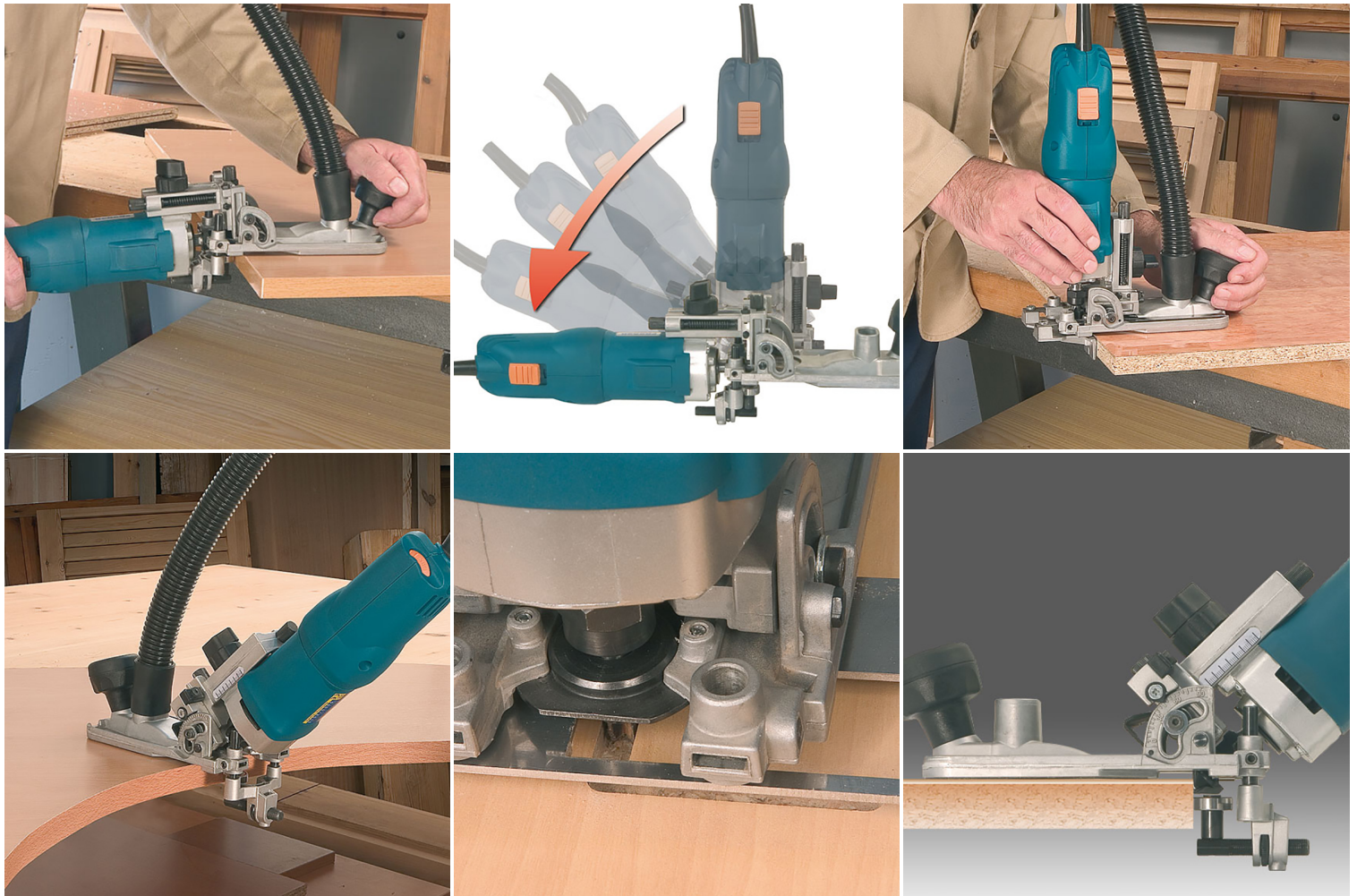


**€445,16 (excl. VAT)**

The only trimmer capable of trimming the excess of the panel or edge surfaces flat or at any angle, without changing the bit. The wide, adjustable base provides very efficient guiding, making it easy and comfortable to trim edges. The unique tilting system of this trimmer offers a wide range of additional possibilities. The machine is also equipped with a powerful 750W motor. Equipped as standard with an electronic speed control and monitoring system to maintain speed. In this way, a constant speed is always guaranteed, regardless of the effort of the machine. Equipped with a connection for dust extraction.

**SKU:** VIR-FR292R

## GALERIJAFBEELDINGEN



The only trimmer capable of trimming the excess of the panel or edge surfaces flat or at any angle, without changing the bit. The wide, adjustable base provides very efficient guiding, making it easy and comfortable to trim edges. The unique tilting system of this trimmer offers a wide range of additional possibilities. The machine is also equipped with a powerful 750W motor. Equipped as standard with an electronic speed control and monitoring system to maintain speed. In this way, a constant speed is always guaranteed, regardless of the effort of the machine. Equipped with a connection for dust extraction.

### **Trimming with the special 90° router bit**

Thanks to the special 90° bit, it is possible to easily trim edges. The body of the machine can be tilted by 46.5°, so that the milling edge lies about 1.5° to the surface. As a result, damage to the surface during profiling is very limited. If you use the dial, you can profile a new surface as many times as you like in the same way. By tilting the machine to the horizontal position, you can chamfer the edge at an angle of 45°. You can chamfer your workpiece at any angle ( $a^\circ$ ) between 0° and 45° by placing the body of the machine at the correct angle ( $45+a^\circ$  on the machine display).

### Profiling with a straight cutter

The tiltable body of the machine makes it possible to use a straight cutter (included as standard) to trim both straight edges and surfaces. Trim the panel surface by placing the machine in a vertical position. By tilting the machine to 91.5°, you can easily trim the edges. Because the trimmer is at 1.5° to the panel surface, you avoid unwanted damage during machining.

## PRODUCT INFORMATION

- Tiltable trimmer
- Adjustable 0°-91.5°
- Good guidance along your workpiece
  - Powerful motor (750W)
- Electronic speed control & monitoring
  - Unique in its kind

## DESCRIPTION

The only trimmer capable of trimming the excess of the panel or edge surfaces flat or at any angle, without changing the bit. The wide, adjustable base provides very efficient guiding, making it easy and comfortable to trim edges. The unique tilting system of this trimmer offers a wide range of additional possibilities. The machine is also equipped with a powerful 750W motor. Equipped as standard with an electronic speed control and monitoring system to maintain speed. In this way, a constant speed is always guaranteed, regardless of the effort of the machine. Equipped with a connection for dust extraction.

**Trimming with the special 90° router bit** Thanks to the special 90° bit, it is possible to easily trim edges. The body of the machine can be tilted by 46.5°, so that the milling edge lies about 1.5° to the surface. As a result, damage to the surface during profiling is very limited. If you use the dial, you can profile a new surface as many times as you like in the same way. By tilting the machine to the horizontal position, you can chamfer the edge at an angle of 45°. You can chamfer your workpiece at any angle ( $a^\circ$ ) between 0° and 45° by placing the body of the machine at the correct angle ( $45+a^\circ$  on the machine display).

**Profiling with a straight cutter** The tiltable body of the machine makes it

possible to use a straight cutter (included as standard) to trim both straight edges and surfaces. Trim the panel surface by placing the machine in a vertical position. By tilting the machine to 91.5°, you can easily trim the edges. Because the trimmer is at 1.5° to the panel surface, you avoid unwanted damage during machining.

No video available for this product!

## DOWNLOADS

No download available.

## ADDITIONAL INFORMATION

<b>Weight</b>	2,2 kg
<b>Input Power</b>	750W
<b>Max. diameter router bit</b>	25mm
<b>No-load speed</b>	14000-30000rpm
<b>Collet</b>	8mm