

## VIRUTEX ABB400 CORDLESS DOWEL MACHINE 20V 4AH



~~€1.022,53~~ Original price was: €1.022,53.  
~~€801,41~~ Current price is: €801,41. (excl. VAT)

Designed for drilling panels to insert wooden dowels for panel assembly. Equipped with adjustable micrometric stop for any height and angle. Machine positioning by retractable stoppers and visual references at 32 mm (standard). Double drilling for quick and easy precise connections. Easy adjustment for any panel thickness and variable setting for the right drilling depth. Equipped with external dust collection connection and supplied with handy stackable carrying case.

**Powerful brushless motor with electronic control to keep speed constant under load. Includes two batteries 20V 4Ah and quick charger.**

**NOW ALSO FREE 100 pcs OVVO PERMANENT DOWELS Ø 8 mm**  
**NO GLUE - NO TOOLS - ULTRA STRONG**

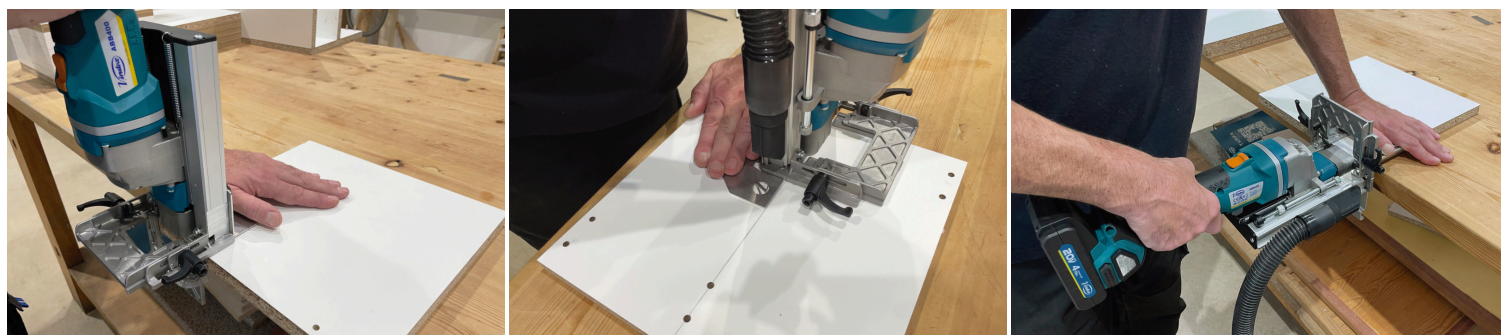
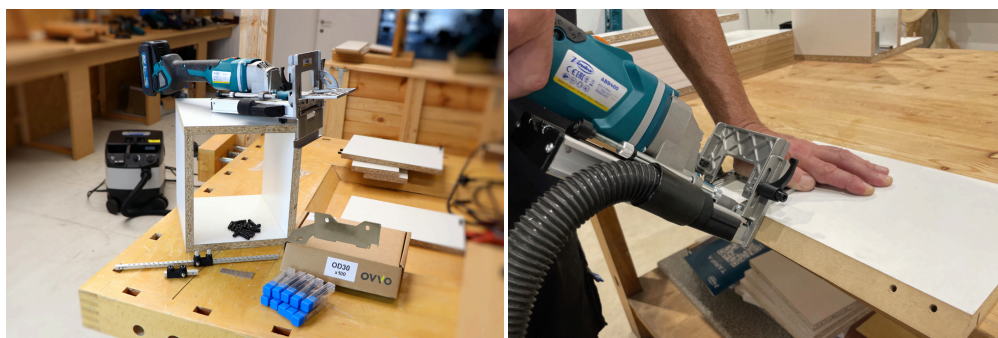
**OVVO**



[Download PDF promotion](#)

**SKU:** VIR-ABB400

## GALERIJAFBEELDINGEN



## PRODUCT INFORMATION

- Dowel machine for assembling panels
  - Quick and easy settings
  - Distance 32 mm (standard)
- In stackable case with 2x 4Ah batteries and quick charger
  - **Comes with FREE accessories worth € 221.12**
- Includes 4 sets of drills (6 mm, 8 mm, 10 mm, 12 mm)

- Free 100 pieces of OVVO OD30 permanent dowels Ø 8 mm (NO GLUE, NO TOOLS, EXTRA STRONG)

Most lightweight and compact dowel machine on the market. The inclined front plate to work at any angle is fully embedded in the base. So the machine does not need additional support on both the left and right for the inclined function. This makes the machine more compact and gives the user optimum visibility of each bore. This dowel machine has a handy jig for quick setting for any panel thickness. On the front plate, you have clear marking of centre point and bore left and right. The vertical support also has this marking and has an anti-scratch felt to prevent damage on the workpiece. The front plate features convenient stoppers which are retractable. The quick adaptor for line drilling can be connected to the machine for quick switching for drilling 32mm. This handy tool can also be connected to the length stop which is adjustable from 80 to 390mm in length. Drilling of shelves in the frame is very easy due to the unique stop. So it is no longer necessary to take measurements. The dowel machine comes in a strong and stackable case.

## DESCRIPTION

## DOWNLOADS

- [Virutex deuvelmachines AB200-ABB400 promo](#)

## ADDITIONAL INFORMATION

<b>Weight</b>	2,8 kg
<b>Drill diameter min/max</b>	5-12 mm
<b>Boring depth</b>	0-38 mm
<b>Tiltable guide</b>	0-90°
<b>Motor</b>	Brushless, 20V
<b>Batteries</b>	20V, 4Ah