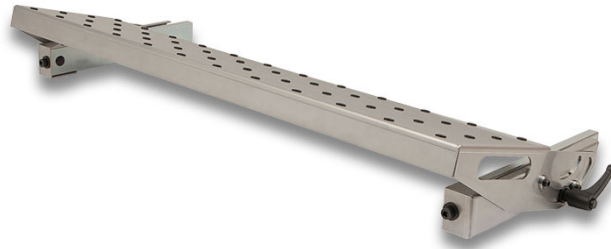


## VIRUTEX MI250 TILTING TABLE FOR EDGEBANDERS



**€266,34 (excl. VAT)**

Specially designed for gluing miter angles between 15° and 50°. Quick and easy setting. Adjustable angle with scale. Table with 48 sliding points for easy banding of edges. With two side handles for easy transport and use. The tilting table is an extension that is attached to the Virutex edge banding machine in a standard table.

Compatible with our models PEB250TA, PEB250TRM, PEB250TRC, PEB200TRC, MEB250 and MEB250A.

**SKU:** VIR-MI250

## GALERIJAFBEELDINGEN



Specially designed for gluing miter angles between 15° and 50°. Quick and easy setting. Adjustable angle with scale. Table with 48 sliding points for easy banding of edges. With two side handles for easy transport and use. The tilting table is an extension that is attached to the Virutex edge banding machine in a standard table.

Compatible with our models PEB250TA, PEB250TRM, PEB250TRC, PEB200TRC, MEB250 and MEB250A.

## PRODUCT INFORMATION

- For handleless edgebanding
  - Tiltable up to 50°
- Compatible with PEB250TA, PEB250TRM, PEB250TRC, PEB200TRC, MEB250 and MEB250A
  - With sliding points for easy passage of your panel

## DESCRIPTION

Specially designed for gluing miter angles between 15° and 50°. Quick and easy setting. Adjustable angle with scale. Table with 48 sliding points for easy banding of edges. With two side handles for easy transport and use. The tilting table is an extension that is attached to the Virutex edge banding machine in a standard table.

Compatible with our models PEB250TA, PEB250TRM, PEB250TRC, PEB200TRC, MEB250 and MEB250A.

No video available for this product!

### DOWNLOADS

No download available.

### ADDITIONAL INFORMATION

**Weight**

5 kg

**Tiltable**

up to 50°