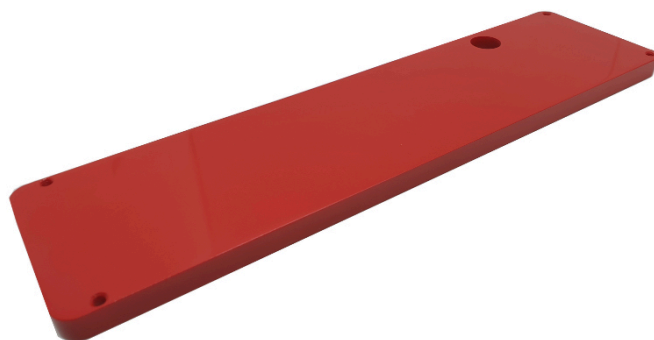


ZERO TOLERANCE INSERT PLATE ZERO FOR PANTHERA SAW TABLES



€115,70 (excl. VAT)

Zero tolerance insert plate for the Itamac Panthera saw tables. To easily make very thin cuts. The plate also prevents damage to the bottom of your workpiece.

SKU: IT-ZERO

GALERIJAFBEELDINGEN



Zero tolerance insert plate for the Itamac Panthera saw tables. To easily make very thin cuts. The plate also prevents damage to the bottom of your workpiece.

PRODUCT INFORMATION

- Zero tolerance insert plate
- For use on ITAMAC Panthera saw tables

DESCRIPTION

Zero tolerance insert plate for the Itamac Panthera saw tables. To easily make very thin cuts. The plate also prevents damage to the bottom of your workpiece.

No video available for this product!

DOWNLOADS

No download available.